

Epsilon Sigma Alpha
INTERNATIONAL®

2010 -2011

Oklahoma State Council

Petticoat Journal



Jacque Edwards, President

Volume 59 Issue 1
August/September

Table of Contents

<u>Page</u>	<u>Contents</u>
3	President
6	1 st Vice President/Nominating Committee Chairman
7	2 nd Vice President/Educational Director
9	Project Director
10	PJ Editor
10	Jr. Past President/Disaster Fund Chairman
11	District II Coordinator
11	District III Coordinator
11	District IV Coordinator
12	District V Coordinator
12	Circle of Life
13	Association of the Arts
14	Chaplain
15	Contest Chairman
15	Convention Chairman 2011
16	Easter Seals
16	Membership
17	Philanthropic Chair
17	Publicity
17	Scrapbook
18	ESA Virtual Food Drive
18	Special Thank You
19	State Leadership
20	District II Leadership
20	District IV Leadership
21	2010 State Convention Final Report
22	Chapter Chatter
29	2011 Convention Registration
30	2011 Hotel Information
31	Convention Program Ads Form
32	Contests Guidelines/Deadlines
35	Educational Report Form
36	Nomination Form
37	Oklahoma State Council Service Report Form
40	Chaplain's Report Form
41	Minutes of May 1, 2010 Annual Convention 1 st Assembly
44	Minutes of May 2, 2010 Annual Convention 2 nd Assembly
46	Minutes of June 19, 2010 Exec & General Board Meeting
48	Minutes of June 19, 2010 State Council Meeting

Cruisin' with your President Jacque Edwards



April 30, May 1 & 2. - I will begin with the 67th Annual State Convention in Tulsa. I had the honor of introducing our IC Rep, Vickie Farris at the Leadership Workshop. What a fun and learning workshop. The next big event was the Friday night mixer. I chose a play called "Ducktails and Bobby Sox" from the 50's era which included 17 actors consisting of our Officer candidates, District Coordinators, 2011 Convention Chairs and some others. And yes, we had full costumes along with stage backdrops. Some of the actors laughed so hard, they could not even say their parts. What fun!!!! Of course the greatest highlight for me was my installation ceremony given by Rosalie Griffith and Lora Thompson, (my long time mentors) on Saturday evening. The stage was full of black, white and silver music notes along with silver curtains as backdrops plus a large black 50's record in the center called "Lost in the 50's" to go along with my theme. My Kappa Theta sisters, my former chapter sisters Omega Pi, the Sooner Senioresses and Jane Thomas from the Oklahoma School of the Blind served as Honor Guards and wore black dresses holding their "Hot Pink" lighted Sabor Swords. They were stunning. I was so thrilled to have my family attend including my two sons who spent hours drawing the backdrops and helping their mother make the stage decorations. The greatest honor was seeing my daughter Shelly Labus installed as my Corresponding Secretary. Lastly, thank you to all the officers on my board who dressed in long, black dresses trimmed in white, as I wore a "Hot Pink" gown with silver accessories. I was yet honored to have my sponsor sister Dee Carroll all the way from Florida to raise my gavel on Sunday morning. For me, it was a dream come true. (If you missed the Convention, you missed a lot of fun!!!)

My state theme is "Cruisin in the 50's" and will consist of many different events, a lot of 50's fun and of course business meetings.

May 15, 2010 – Board Training/Planning Meeting – My head was still spinning from convention when I traveled to my first official visit as State President. 17 of the General Board attended this meeting held in Edmond at Johnnie's Grill. Because so many on the general board are new, each was asked to share a memorable moment pertaining to the 50's music. What fun and we learned something about each person none of us knew. I re-invented the mentoring program for each executive and general board member. A handout was passed around and we discussed the importance. We broke into small groups and each group taught each other about their position requirements. I introduced the "Spirit Stick" and how we would utilize it. It soon was implemented and the little "pink polka dot" bucket begin to fill with quarters as their payment for not being positive. We are to carry our "spirit sticks" all year long to ESA related events/meetings. If you have not ever eaten at "Johnny's, you are missing the biggest and best onion rings in the country.

May 16, 2010 – I always enjoy attending the Tulsa Area Council Founders Day Tea and I was given the honor of presenting all of the Chapter awards. Good Job on all the decorations and the food was yummy!!!

May 20, 2010 – Sneak Peek of the St. Jude Dream Home – It was a thrill to see so many folks tour the home in two hours located in Edmond, OK. The home is a beautiful two-story home overlooking the Iron Horse Ranch Community Center and pool so beautifully landscaped.

May 23, 2010 – St. Jude Dream Home - Hosted the St. Jude Dream Home from 12:00 until 5:00. What a thrill it is to see the expression on all the faces when they walk into the Dream Home.

June 3, 2010 – Kappa Theta Founders Day & Installation Banquet - I had the honor of installing Libby Zaage as the chapter President in my own chapter as the State President for the Oklahoma Council. The banquet was held at the Victorian Tea Room. Her theme is “Clowning Around with ESA”. The installation table consisted of a variety of clowns and my ceremony included a certain clown for each officer. Each officer and their clown were asked if they were willing to accept their office. A lot of laughter was heard throughout the evening. The outgoing President, Marie Thomas presented her President’s Award to Jacque Edwards (that would be me) along with a bouquet of flowers. What a shock and honor!!!

June 5, 2010 – Training/Planning Meeting – This was meeting #2 held in Guthrie, at The Stables Café. Because the month of May is so crowded with other events and graduations, I was willing to hold another training meeting in hopes to include more of the board. 14 were able to attend this meeting. Between the May 15 meeting and this one, almost the entire board was able to attend. It was pretty much a duplicate of the May 15 meeting. The Stables is noted for its smoked bar-b-q brisket and fried onion rings. (Their onion rings covers an entire oval plate). Good meeting and we incorporated some 50’s fun.

June 6 – June 11 – New York City trip - Our tour guide from Oklahoma was Vicki Donley from Beta Psi in Clinton and she was brave enough to take 24 adult ladies to NYC, a trip we will never forget. Several of the ladies were ESA sisters and it was fun making new friends. I think she took us to every site there was to see in NYC, leaving no time to rest. We left our hotel daily a 8:00 am. and returned at 11:30 – midnight everyday. If you are not athletic you better get in shape prior to Vicki’s trips. We had FUN, FUN, FUN!!!!!!!

June 12, 2010 – Wake up early to drive to the Dream Home in Edmond and work the 9-1 shift. (I was still trying to recover from getting home the night before from NYC at 11:00 p.m.) Sold a good number of tickets.

June 14, 2010 – Attended Kappa Theta (my) chapter business meeting under the new leadership of President Libby Zaage. She did a really good job and she loves to cook so we got to eat a lot. Sylvia Ochs brought a guest speaker to share some insight to compounding medications and the usefulness of it to your body pertaining to her educational theme. Outgoing President Marie Thomas presented the “Woman of the Year” award to State Prez. Jacque. Wow!!! Another shock. Thank you Kappa Theta sisters.

June 18, 2010 – Left for Shawnee to attend the 2010-2011 Budget meeting and the 2011 Convention meeting. Also, set in on Contest Chair Dr. Billye Peterson hammer out the revisions of our contests. What a major undertaking. Good job Billye!!!

June 19, 2010 – Left the Hampton Inn for the 1st Christian Church to preside over my first Executive/General Board and State Council meeting. I can not remember a time in my ESA history having 14 motions to take care of in one meeting. WOW...was I exhausted, but we made it through. Leave it up to Nancy Buck, Music Entertainer to produce 50’s fun including a quiz and yes a “Twist Contest” with Vivian Gibson placing 1st and Rita Hains placing 2nd. What a cheerleader we have in the spirit of our Membership Chair Mary Johnson. She is the best!!!! Our new “Spirit Sticks” boosted us to be positive. Donna Shook donated items for the Silent Auction – thank you Donna. Our first “Spirit Awards” went to Dr. Billye Peterson, June Miller and Shelly Labus. Another record was set by finishing at 2:12 p.m. Thank you Aletha for the nice compliment. Overall, I think we did accomplish a lot and all 59 members and guests had a great day and we did survive all 14 business motions.

June 23, 2010 – Drive to Edmond and work at the St. Jude Dream Home from 3:00 p.m. until 9:00 p.m. The traffic was a little slower, however, we kept busy greeting and selling tickets.

June 26, 2010 – Back to the Dream Home to work the 9:00 a.m. – 3:00 p.m. shift. We were consistently busy selling tickets and listening to all the dreamers desires to win this beautiful half million dollar home.

June 27, 2010 - The big day arrived. It was the St. Jude Dream Home Give-a-way for the Edmond home at Fox 25 TV Station. We did a fantastic... job, even though we lacked just a few tickets having sold out. Thank you ESA volunteers. It was exciting to see a young couple see the home they just won. They were so over-whelmed!!!!

I will end for now as I need to turn this into our new PJ editor (Mary Adams) and get myself ready to attend the IC Convention in Minneapolis. I am so thrilled as I get to represent Oklahoma in the Flag Ceremony along with many other State Presidents across the US. I feel so honored and will do my best to represent our great state of Oklahoma.

Please remember our **August Leadership is August 20th and 21st in Guthrie**. You will want to attend this meeting as we will have the **“Shopping on the ESA Mall”** for chapters to sell their items and show off their talent(s) and we will have a **surprise “Celebrity”**. **DON'T MISS** this meeting!!!

ESA love to all.
Jacque



**“Come Dance with Me in ESA”
1st Vice President/Nominating Chairman
Gwynn Nell Swanson**

Hello ESA Sisters

I sure hope you are keeping cool and dry.

Now for our District Coordinators. Please, please attend your District Leadership and meetings this year. The Coordinators are working hard to bring you good news from the State and IC level so you will be up to date about what is going on. Be sure to put the dates on your calendar. Don't let them down! Attend your District meetings this year and have some fun and renew old friendships.

I know it's really early but some times the time passes too fast. It will be March before we know it and time will be running out for nominations for new officers.

If you do not know who is on the nominating committee, let me introduce them. It is:

Billye Peterson – Dist II
Lisa Zachau – Dist III
Robbin Brown – Dist IV
June Miller – Dist V

If you know of any one in your chapter that would like to serve as an elected officer or like to be appointed on the board, please contact me or any one of these ladies. We are here to help answer any questions you might have.

The qualifications are simple and are on our web site or contact me or any one of these ladies and we will get you the qualifications. It's real easy!

Come join me as we have some fun next year. It's time to relax and enjoy each others company, laugh and dance you worries away!!

“Come Dance with Me in ESA”

Gwynn Nell Swanson

1st Vice President/ Nominating Chairman

2nd Vice President/Educational Chairman - Joyce Gibson



My state educational theme for this year is: “Approaching the Years with Grace in ESA”. There are many ideas that this topic can cover. It includes anything that YOU feel we need to know as we are approaching our senior years in life. We want to have the knowledge necessary or at least the resources to help us keep our stress levels low and happiness levels high. When we are knowledgeable about a particular subject, we display style, grace and we are empowered. Remember, we are never past the point of learning something new.

I have different topics that I will cover this year. The categories will be as follows:

June – Health & Exercise	December – Utilize Emergency Care
July – Don’t Waste Your Time	January – Taking Care of Ourselves
August – Living Wills	February – Medicare
September – Social Security	March – Safety Checklist
October – Identity Theft/Bank Fraud	April - Death
November – Be Aware	

You can find all of the forms you will need on our website: www.oklaesa.org.

Please do not hesitate to contact me if you need any forms mailed to you or if you have questions.

I hope that each chairman will consider submitting six or more educational reports to qualify for the Gold Link Award. As you are developing your educational programs, please consider compiling and submitting a Gold Seal Entry at the end of the year. Chapter Presidents remember to nominate your Educational Chairman for the Distinguished Athenian award.

I am really looking forward to receiving your educationals. Please try to have fun with my theme and venture out with your ideas. If you present an educational on my theme, a certificate will be given. I hope each of you walks away with at least a bit of information that you didn’t know before. I believe we can really learn a lot as we “Approach the Years with Grace in ESA.”

Joyce Gibson
OK State 2nd Vice President/Educational Director
P.O. Box 179
Norman, OK 73070
Email: Joiesea02@aol.com Phone: 405-364-0484

Educational: “Don’t Waste Your Time”

While we are “Approaching the Years with Grace”, I want to remind you that with **grace** comes confidence. According to Merriam-Webster, to organize is “to form something into unity”. Where there is unity, there seems to be fewer opportunities for stress to arise. Different forms of organization are important to all of us in different ways. Organization of time, belongings or just life in general is not something that we do as much as we should. We all put off organizing because we don’t think we have time. Put “wasted” minutes to work, even just five minutes a day adds up to seven hours a month. Plenty of time! While you are waiting, here are a few quick and practical organizing tips to help you make the most of the time you do have.

Time-Saving Tip # 1

While popping popcorn or if you have three minutes in the kitchen

- Organize the day's mail
- Organize a drawer
- Rifle through the overflowing coupon box and toss the expired ones

Time-Saving Tip # 2

While cookies are baking or if you have twelve minutes in the kitchen

- Plan dinners for the week and write a grocery list
- Organize your pantry and throw out expired items
- Spruce up your spice area: put spices you use most to the front and throw out "mystery" spices without labels

Time-Saving Tip # 3

While the tub fills up or if you have three minutes in the bathroom

- Clean the toilet. Pour in cleaner, then brush and flush
- Organize the space under the vanity: toss old bottles you haven't used in months

Time-Saving Tip # 4

During TV commercials or if you have four minutes in the family room

- Recycle old magazines, and put those you intend to read in the rack
- Do some quick exercises

Time-Saving Tip # 5

While your kids/grandkids brush their teeth before bedtime or if you have five minutes

- Organize the sock and underwear drawer, tossing anything not wearable
- Put all stray tapes and CDs in their cases

Time-Saving Tip # 6

Waiting to pick someone up or you have five minutes in the car

- pay bills: store statements, envelopes, checkbook, register, envelopes and stamps in an accordion file with a handle
- Schedule or confirm appointments, order prescription refills

Time-Saving Tip # 7

Waiting in line at the grocery store or if you have three minutes on your feet

- Schedule an appointment you have been putting off
- Organize your purse,

Time-Saving Tip # 8

Waiting at the doctor's office or if you have ten minutes in a comfy chair

- Close your eyes, practice deep breathing and organize your thoughts
- Organize your social life: make a lunch date with a friend
- Tackle your "should do" list: write a thank you note or a card to a friend

Time-Saving Tip # 9

On the phone, on hold or if you have one to three minutes in your home office

- Organize your email: create folders and delete spam
- Go through your file of tax deduction receipts and paper clip those in the same category to simplify the process for next April

The next time you are waiting, don't "waste your time." Use your time to your advantage and get organized.

Joyce Gibson

OK State 2nd Vice President/Educational Director

Email: joies02@aol.com

Resources & References:

Wikipedia

Jennifer Haupt

Donna Smallin

Merriam-Webster

**State Project Director
Charlene Law**

First I want to thank all of the Oklahoma State Council members who contributed to the State Projects Fund last year. It was a great success and I am counting on the Oklahoma State Council to continue to be as generous as you have been in the past. At the June State Council Meeting it was voted and approved by the members to award the allocated funds to Oklahoma School for the Blind and the Oklahoma School for the Deaf. We had a total of \$4,099.50 to divide between the two schools.

OSB has 98 students, which totals \$1,989.56. They had various items; due to the length of the wish list I will list the amount, a few items and what department of the school requested the items.

Wish list:

Library Books	Soft Braille Books - 150@6.00 each	\$900.00
Clinic	Radio/CD Player etc	\$479.32
Small Girl's Dorm	Misc. Toys	\$152.51
Young Boy's Dorm	Misc. Toys, Sony Dual Shock 2 PS2	\$160.58
Older Boy's and Girls Dorms	Video Rockers and Bean Bag Chairs	\$314.00
	Total	\$2,006.41

The total of their wish list is \$2,006.41 the allotted amount is \$1,989.56. This represents an overage of \$16.85; Deb Hughes made a donation to cover the overage, Thank you Deb for your support for OSB

OSD has 127 students, which totals \$2,109.94. Due to the cutbacks OSD has experienced they have included some items that are school supplies they would normally purchase. Our help supplies these items without the teachers having to reach into their personal funds.

Their wish list included items for Outdoor Activities, Sciences as well as supplies to help the children with their Accelerated Reading Medals. The students are being challenged to improve their reading.

Oklahoma School for the Blind begins class August 5, as soon as I receive the Adoption/Sponsorship forms I will contact those who have noted they want to keep the same students. As an added incentive your chapter will now receive points for **ALL** children adopted by your chapter or individuals in your chapter. You can also encourage family members to adopt a student. My goal is to have ALL children at OSB and OSD adopted, please help me to reach that goal.

I will be taking donations for candy to ensure all students at each school have a treat bag for Halloween and gifts at Christmas as we have done in the past.

Charlene Law



**Petticoat Journal Editor
Mary Adams**

A big thank you for sending in your PJ articles and reports on time! I challenge all the chapters to submit an article. It's a great way for your ESA sisters to get to know you and your ESA projects and how they benefit your local communities and our State and National projects.

The deadline for the October/November issue is September 5th. The earlier you get your articles and reports in the better. It's an honor to serve as PJ Editor and I look forward to getting the OKLA ESA news out each issue. Each PJ will be online at www.oklaesa.org.

You can email your articles to wr_meadams@hotmail.com or pjeditor@oklaesa.org or mail to 12901 E 590 Road, Inola, OK 74036.

**Junior Past President/ Disaster Fund Chair
Deb Hughes**

As many of us know, situations can change quickly and without notice. You make the difference in the lives of many people within your local community, across the state, and beyond. However, you also make a difference to ESA members through our ESA Disaster Fund; **we take care of each other.**

At the August 21st State Leadership Meeting, I will be introducing two fun ways to raise funds together, as individuals and chapters. Step up to help our members.

The ESA Disaster Fund purpose is "to assist an ESA member whose home and/or personal belongings are destroyed or damaged extensively by one of nature's causes – fire, flood, etc. Assistance may also be given when a member incurs heavy financial responsibility due to a debilitating illness or accident which involves her or the immediate family member *who resides in her home and for whom she is legally responsible.*"

Please send me your donation checks made payable to **ESA Disaster Fund**. Naturally contact me for application forms and questions.

Disasters won't wait! I hope you will "cruise" with me to help our members when disaster strikes.

-Deb

Deb Hughes, Jr. Past President/ Disaster Fund Chair

2817 S. Hudson Ave.

Tulsa, OK 74114

Phone: 918.269.3857

Email: debokesa@hotmail.com or jrpastpresident@oklaesa.org

District II
Nellrita Barrick, Coordinator
"ESA ... Footprints of Leadership"

The state May Meeting, June State Council and August Leadership(s), we are off and ready to go "Crusin' in the 50's."

Last year, Linda Southerland and I set a goal to attend each of the district's leadership seminars. Because of the distance, we arrived on Friday afternoons prior to the Saturday meetings. For fun, at each town, we took in a movie and had dinner out. Then, we experienced hearing a broad range of speakers. And, we will never forget bowling during the lunch break at McAlester. Enlightening!! That describes the varied business meetings, activities, etc., at the different district meetings.

Yes. I know Linda and I are retired and not everyone can make all of the district meetings. Of course, I encourage you to make your own district's leadership meeting, but I hope that for some of you, for the first time, you will attend at least one more outside of your district. May I suggest putting District II's Leadership Seminar on your schedule, August 28th? You're right, it is a longer journey to Clinton. Fact is, it's no farther than the miles from here to your district or the state council meetings. It is not my intention to come on too strongly, but we in District II hope you will consider putting forth the effort and join us for an informative, motivational and fun time.

Check out the flyer copy in this PJ publication for the place, time, directions, itinerary and other information. We suggest Clinton's Hampton Inn for your lodging. The telephone number is (580) 323-4267. Montana Mike's is next door for dining. Big K (K-Mart) is across the street. The movie theater is only 14 miles to the east at Weatherford with 2 showings per night. Hey, let us know and if you would like, we Clinton gals can plan a get-together with snacks, games and time for gabbing

District III
Rosemary Benning – Coordinator

Is the summer hot enough for you ladies? The older I get the hotter it gets. I hope this isn't a sign of what's in store for me! (Ha! Ha!)

The District III Leadership will be September 11th at Highland Park Christian Church, 31st and Hudson in Tulsa. The same place it has been the last 2 years. Lunch will be \$10.00. Donna McCandless, District Project Director, will have a silent auction to raise money for the District III Project. Chapters please send your District dues of \$10.00 to Debby Thompson, Treasurer, 15358 East 91st St. North, Owasso, OK 74055.

Hope to see all of you there. Come join District III for a good time.

District IV Coordinator
Nancy Baucom

Greetings ESA Sisters! Hope everyone has been enjoying their summer. District IV is looking forward to a great new year.

We would like to invite you to our leadership meeting, September 18th at the Greiner School for the Handicapped in Lawton. Registration will begin at 9:30 AM with the meeting starting at 10:00 AM.

Directions to the Greiner School: You're probably going to run into construction work south of Key Gate & all the way to Lawton. The exit to take is @ the end of the construction (if any) which is Gore Blvd. That will take you west. Turn right at the traffic light onto Gore Blvd. Stay on Gore to Wallock (which will be on the left). Turn south (or left) onto Wallock. Stay on Wallock to B Avenue and you'll "run" into it. (The school will be on the corner). Exact address is 10 SE B Avenue. HOPE TO SEE YOU THERE!!!

**DISTRICT V
Jeanne Meyer**



Today's Gonna Be A Good Day...Because of ESA



The District V Leadership will be held September 25, 2010 in Eufaula, Oklahoma at the Bridgeport Dunes Condominiums Clubhouse. It is off Texana Road which is the exit for Eufaula State Park.

Registration is \$10 and will start at 9:00 a.m. The Seminar will be held from 9:30 a.m. till 2:30 p.m. and will include a wonderful salad luncheon prepared by our hostess chapters Beta Iota, McAlester and Gamma Kappa, Checotah. In addition to our special leadership Keynote speaker and a snippet on ESA Foundation Scholarships, we are inviting the mayors of District V to be our special guests to give us some insight into their communities and we hope to give them insight into what ESA is all about.

Come join us for a good day with ESA sisters sharing fun, food and a fantastic insight into the communities where ESA chapters live.

Submitted by Jeanne Meyer,
District V Coordinator

**Circle of Life
Amber J. Alexander**

Hello everyone! First of all, let me express my extreme excitement for being able to serve as the Oklahoma Circle of Life Coordinator for this year. Due to budget cuts, the annual Circle of Life Training Seminar in Memphis was cancelled this year. However, IC has been working hard to try to get some new ideas out and brainstorm with all the State Circle of Life Coordinators.

Congratulations to everyone who participated with the Oklahoma St. Jude Dream Home Giveaways. The Oklahoma City area home raised \$675,000 and the Tulsa area home raised \$805,150!!!! What an amazing accomplishment! Kudos to everyone who worked hard to make this possible.

Please mark Saturday, November 20, on your calendars. We had amazing results from last year's Give thanks. Walk. However, this year is already looking to be even more amazing. We will be having not one, but two locations in Oklahoma this year. One in Tulsa at Woodland Hills Mall and one in Oklahoma City at Penn Square Mall. I am also excited to report that the registration website for the Give thanks. Walk. 2010 is now LIVE! Please visit www.givethankswalk.org to check out the new site and let the recruitment begin! Please contact me if you would like to join a committee for the Give thanks. Walk. (Cont. Page 13)

You could volunteer for recruitment. Duties include:

- Work with volunteer committee to identify potential corporate/ community/ family team captains and participants.
- Recruit corporate/ community/ family teams through group presentations and individual asks.
- Serves as point-of-contact for team captains, along with ALSAC Regional Representative, to answer fundraising or event-related questions.
- Provide bi-weekly recruitment updates to ALSAC Regional Representative and committee members.
- Work with ALSAC Regional Representative to host team captain meetings and provide team captains with all necessary resources to support the teams' fundraising efforts.

You could volunteer for sponsorship. Duties include:

- Work with volunteer committee to identify potential sponsors from various sectors in the local business community.
- Work with ALSAC Regional Representative to tailor sponsorship proposal to meet the needs of the local market and potential sponsors.
- Present event sponsorship opportunities to local companies and potential sponsors.
- Provide bi-weekly sponsorship updates to ALSAC Regional Representative and committee members.
- Serves as point-of-contact for event sponsors, along with ALSAC Regional Representative, to ensure that all outlined benefits are provided to committed sponsors.

You could volunteer for logistics. Duties include:

- Work with ALSAC Regional Representative to secure necessary pre-event logistics, such as course layout, table/ chair/ tent needs, signage, staging, restrooms/ port-a-potties.
- Solicit in-kind donations of food and drinks (bagels, fruit, water/ juice, etc) for the event, as well as items for participant goody bag.
- Secure volunteers for the day-of-the event to fill all roles (set-up/ tear-down, registration, cheer stations, event program) and coordinate volunteer efforts on the day-of.
- Work with ALSAC Regional Representative to oversee event set-up and tear-down.

Please let me know if your chapter is planning a St. Jude event. St. Jude event forms can be downloaded from the website. Please let me know if there is anything I can do to help at any time. I am looking forward to a great year.

Amber

Association of the Arts Peggy Pate

GOOD NEWS! The Association of the Arts Entry Form has been revised to include all of the divisions listed on the IC form. These added divisions include additional categories to provide more opportunities for our membership to show off their talents. The nine divisions are as follows: Literature, Music, Crafts (Wearable Art), Photography, Crafts (Painted Art), Visual Arts, Crafts (Mixed Media), Needlework, and Holiday (Ornaments & Decorations). Check it out on the website and start thinking about your entry!

Peggy Pate

Chaplain's Report Vivian Gibson

Cards have been sent to the following :

Birthday Greetings

Judy Lester, Indiana, Past IC President, 90th Birthday
Charlene Harrell, Sigma Chi, Inola, number of years unknown
Cuba Gulley, Delta Epsilon, Del City, 90th Birthday

Thinking of you

Lost Home during May 10 Tornadoes:

Chris Parson, Zeta Epsilon, Seminole;
Martha Marsh's, Beta Rho, Midwest City, daughter, Deanna
Billie Linville's, Delta Epsilon, Del City, daughter Leda.

Damage to home during May 10th Tornadoes:

Betty McCallister, Delta Kappa, Norman
Pat Langdon, Delta Kappa, Norman

Get Well:

Mary Keck's (Beta Rho, Del City) husband, Shorty; undetermined illness
June Little's (Beta Rho, Del City) husband, Merle; possibly
Sue Knight, Sigma Chi, Inola, husband Don had eye surgery
Charlene Law, (Gamma Delta, Tulsa) knee surgery;
Gertrude Riddle, Gamma Pi, Inola, husband had back surgery;
Barbara McClure, Gamma Pi, Inola, low blood sugar;
Bobbie Martin, Gamma Pi, Inola, Basal Cell skin cancer removed.
Helen Checorski, Delta Kappa, Norman, unknown illness
Donna Wiley, Delta Kappa, Norman, skin cancer removed

Sympathy:

Karen Froese, former member of Sigma Chi, Inola, lost her mother;
Judy Montgomery, Zeta Epsilon, Seminole, lost her sister-in-law;
Janie Stevens, Gamma Pi, Inola, lost her daughter in law.

Congratulations: Jenny and Marvin Lizama, birth of baby girl.

If you know of someone who needs a card, please let me know
When you send me information, please be sure to send the address of the person. If you are sending information about a spouse or someone other than the member, please send the name of the person. Something more than husband of or daughter of; need a name.

Thanks, Vivian Gibson
State Chaplain

Contest Chair Dr. Billye Peterson

Many changes to our contests were voted on at the June State Council meeting, so PLEASE read your PJ for highlights from each of the contest chairs. Aletha will have the new forms on the www.oklaesa.org website as soon as possible. Here is a list of what to be looking for:

- Association of the Arts added 3 NEW CATEGORIES
- Gold Seal Judging Sheet has been completely REDONE to more emulate IC
- DIANA packet and Judging Sheet are totally NEW and designed JUST FOR OKLAHOMA—do NOT use the information on the IC website (IC no longer sponsors a DIANA contest)
- Outstanding Chapter Judging Sheet has MANY CHANGES—make sure you study it
- Outstanding Youth for Junior and Senior High are totally NEW and designed JUST FOR OKLAHOMA—do not use the information on the IC website (IC no longer sponsors an Outstanding Youth contest)

If you need any contest information snail mailed to you, I'd be happy to do so. I encourage each chapter to participate in as many contests as possible as it makes convention twice as fun!

Dr. Billye Peterson
929 Jacobs St.
Edmond, OK 73034
405.812.0138 billyepeterson@gmail.com

Convention Chair Ramona Paine

The 2011 Convention hostesses: Kappa Theta-Guthrie, Theta Tau-Kingfisher, Gamma Zeta-Edmond, Zeta Gamma-Shawnee, Sigma Chi-Inola, Beta Psi-Clinton, Beta Zeta-Oklahoma City and Omega Pi-Tulsa are making plans and preparations for a rock 'n roll weekend ~~~~"Rock 'n Roll with ESA" on April 29, 30 and May 1, 2011 at the **Clarion Meridian Convention Center in Oklahoma City.**

The fun will begin on Friday night with a SILENT AUCTION and CANDIDATE SKITS---and maybe a sock hop with a DJ. Saturday will bring the First General Assembly with an impressive flag ceremony as the opening. Election of officers and any changes in the bylaws will happen during this assembly. The AWARDS LUNCHEON follows ...you won't want to miss this exciting event! CEREMONY of REMEMBRANCE is tentative planned after the Awards Luncheon. Then comes the highlight of the evening ~ THE INSTALLATION BANQUET! Gwynn Nell and her new band of officers will be installed as the new officers! Sunday has arrived and our traditional Brunch will be here followed by the Second General Assembly where new officers and committee chairs are introduced and goodbyes are said by the outgoing officers----somewhere Jerry will be busy taking pictures of the rock 'n roll events. AND WHO WOULD WANT TO MISS THE SOONER SENIORETTE INDUCTION OF JACQUE EDWARDS INTO THE SS TROUP!

Theta Tau is hosting the Hospitality Room and maybe even try out a few new "drinks" as a Theta Tau member will serve as a "server" of some tasty drinks. Gather there for games and reminiscing about your favorite music during this era and just visiting.

Registration is \$85 (women) and \$40 (men). The room rate is \$99+tax with free parking and a deluxe continental breakfast. The registration form and hotel information is elsewhere in the PJ.

Easter Seals
Marcie Ellington, Chairman
July 2010

Greetings, I sure hope that you will be in attendance at the August Leadership meeting, because you will have a chance to win an

Easter Seals 1998 Limited Edition Precious Moments

porcelain figurine called "Somebody Cares".

Our ESA Sister Carol Rethford of Beta Rho Chapter donated this. Chances will be one for \$3.00 or two chances for \$5.00.

You all know of Easter Seals great work with children's disabilities, but they are becoming more involved with our returning troops from military service who have disabilities. Easter Seals is positioned to offer military and veterans systems of care with viable options to support and augment current reintegration efforts including job training and employment, medical rehab, adult day services, camping and recreation and child care. They have started a new fundraising campaign to help with those military families called CAMP HOPE.

CAMP HOPE is designed to provide camping opportunities for the children of military service members so that they may just be kids and have a common bond with the children of other deployed service members. The cost per camper for a week-long program is \$600.00. You all may have received the ESA Easter Seals CAMP HOPE letter with the opportunity to donate \$10.00 and receive an Easter Seals Lapel pin. You may also contribute at least \$50.00 and receive a CAMP HOPE Flag pin. It is also recommended that each chapter raise \$600.00 to commit to sponsoring one week of camp for a deserving camper. There are twenty-three Easter Seals camping and recreation sites scattered across the nation that are used for this camping experience. This will be an ongoing program not just for this summer, so you may donate at any time. Please support Easter Seals and CAMP HOPE. Thank you.

Membership
Mary Johnson



Here we are! It's a new year and all who attended the recent State Council meeting in Shawnee already know the secret is out and **"WE ARE ESA PROUD!"** I exercised my "non-existent" authority as the Membership Chairman and appointed each and every one of you to the Membership Committee so fasten your seatbelts and hold on!

We are off and running and already seeing results from implementing some of the wonderful ideas, last year's Membership Chairman, Rita Hains, shared with us in the April/May issue of the Petticoat Journal.

We wrote notes to many members at large throughout the state at the State Council meeting. Although they are not affiliated with a specific chapter, they certainly are not forgotten and we want them to know it. We met some very good prospects at the Dream Homes in Tulsa and Edmond and are currently providing them information about ESA and its mission.

We are looking outside the box in establishing new chapters and are working out details to start a new chapter for those who work in downtown Tulsa. The plan is to meet during the lunch hour. There is a great deal of interest and we are very close to calling upon the "DOERS" for their assistance.

If we promote ESA with the same enthusiasm that we participate in ESA activities; there is no end to the growth potential of our membership. (Cont. Page 17)

Join and participate as an ESA group in local activities sponsored by other organizations outside of ESA. Make plans now to participate in area parades. Veterans Day is not that far off and many communities have special ceremonies and parades honoring our nation's veterans. If you are not up to building floats, decorate cars and feature your chapter's involvement and participation in Project Hugs; Blue Star Mothers; Hope for Heroes, etc.

Support your local Chamber of Commerce by having a booth at Chamber sponsored events. What an opportunity to share ESA's mission and the commitment to support the needs in our local communities.

Opportunities present themselves everyday for us to share what ESA means to us, let's utilize them.

Remember **"WE ARE ESA PROUD!"**

Philanthropic Donna Shook

This year IC has updated many of the forms. Your local Philanthropic Chairperson can go to <http://www.esaintl.com/iccouncil/form.cfm> for a copy of the changes. Webmaster Aletha Bolt will be publishing the new changes for all forms, entries, and rules toward the end of summer.

Remember that the new year actually starts April 1 for services performed. All chapters can receive additional points if the reports are sent monthly. Included in this PJ are the basic service report forms and the chairwomen's names, addresses, and e-mails to whom these forms are mailed.

I am looking forward to hearing from the chapters and learning about all the exciting events and projects in which the members are involved. Be sure to e-mail or call me if questions arise. I will research or find out the answer. Have a great year.

Publicity Joyce Lacey-Kenney

For those Chapters who plan to enter in the PUBLICITY Contest I have a few reminders to help you begin the year for preparing your Publicity Book. You get points for each story published in the PJ, for each story or photo published in the Jonquil/ESA Website, each newspaper announcement for ESA meeting, for News releases, article or feature story published in the newspaper, each photo published in the newspaper. These are just a few things to remember. To find out about all of the points go to the esaokla.org website and look at the Publicity Contest judging sheet. I am hoping to have a number of publicity books for judging this year.

Scrapbook Kay Bader

I am excited to be making Jacque's "Cruisin' in the 50's" scrapbook this year. I just want to remind you to make an extra copy of your favorite events, news clippings, photos, etc. to share in Jacque's book. She is really interested in all that you busy gals are doing and is excited to see what is happening all over the state. So let's make her scrapbook one she'll enjoy forever. Be sure to label and identify all pictures, events, photos, etc. Please send enough to fill a 12" x 12" scrapbook page. Let's keep those memories of your fun and successes alive and being shared! Mail them to me at: Kay Brader - 5516 Woodmont - Oklahoma City, OK 73135

Thanks in advance,

Kay



ESA VIRTUAL FOOD DRIVE

Early last spring our IC President Jamie Atchison announced an ESA Virtual Food Drive that officially concluded at the IC Convention in Minnesota.

Thank you Oklahoma members and chapters for your participation in the food drive program this spring. ESA members have made an impact and here's the analysis.

The monetary and cash donations totaled \$2,228.75, including cash donations at state convention. To use the formula used by food bank, every \$1 cash donation can purchase \$9 worth of food at the food bank. To put that into another perspective, every \$5 cash donation can equal 18 meals.

Additionally, there were 533 pounds of food donated and an additional 299 non-perishable items donated to food pantry programs across the state and through the National Letter Carriers Food Drive in May. You reported 376.5 miles for your shopping and deliveries for a total of 78.5 hours.

I received reports from 12 chapters in addition to food donations at OK State Convention and a Tulsa Area Council meeting. I feel quite sure additional food items were donated through various programs, however these were the amounts reported.

We all know we are experiencing tough economic times and yet once again ESA members show we care. Thank you; OK ESA members are an amazing group!

-Deb Hughes

Thank you

I want to express appreciation to you for the gift card presented at State Convention. Since IC Convention is in Minneapolis, I believe a trip to the Mall of America will be the perfect place to indulge.

I believe in you, your heart, your dream and the difference you make in the lives of others.

The year was outstanding in so many ways. I thoroughly appreciated your hospitality with visitations to chapter meetings, socials, banquets and various events. The year was exciting, challenging and rewarding. It has been my honor to serve, laugh and work with each of you this past year.

Thank you for sharing this journey through ESA. You lift me up with your enthusiasm and dedication to our organization but more importantly in the differences we make and the footprints we leave together. You are shining stars!

In ESA Friendship,

Deb Hughes
OK State President 2009-10

Believe ★

AUGUST LEADERSHIP
MEETING NOTICE
Oklahoma State Council of ESA



Saturday, August 21, 2010



“Envision Leadership in the 50’s compared to 2010”

R & R Restaurant Event Center (south end)

RAILROAD DEPOT

409 W. Oklahoma - Guthrie, OK

(Driving west on Hwy 33 into the downtown area from the hotel, you will pass Homeland, then the Stables Restaurant and just before you cross over the viaduct bridge, you will turn left (south) onto 2nd Street (2 blocks). City Hall will be on the right, so turn to the right (1 block). R & R at bottom of hill. (Please note: DO NOT PARK IN THE RESTAURANT PARKING AREA). You must park on the street or in the parking lot just above, to the east of R & R.

“ESA Shopping on the Mall”
(\$10.00 per table) (Set up at 8:45 a.m.) (Proceeds benefit your chapter)
Make check payable to: Oklahoma State Council
Reserve your table by August 5th

Fun activities await you, plus music entertainment by Nancy Buck, silent auction, quilt raffle, grocery raffle, convention charms available, & 50/50 cookie jar + more.

SURPRISE CELEBRITY coming..... to Leadership...and other guests.

(Friday) AUGUST 20 – SLEEP INN (405)260-1400 (Free Breakfast)

(I-35 and Hwy 33 – Exit #157)

Reserve your room by August 1st



A 12 Room Block has been reserved. Please ask for EPSILON SIGMA ALPHA room block and have them remove the room from the block when placing in your personal name. This will reduce confusion for the hotel. (Kathy Loye, Mgr. or Jessica can assist you.)

Exec/Gen Brd Meeting (9:15 a.m. – Registration) (9:45 a.m. Brd Mtg.)
Council Leadership & Lunch (10:20 a.m.-Registration) – (10:30 a.m. Leadership Meeting) Lunch – \$14.00 (RSVP by Aug. 5th) to: Shelly Labus/Corres.Sec.—
shelly.labus@yahoo.com



**DISTRICT II LEADERSHIP SEMINAR
"ESA ... FOOTPRINTS OF LEADERSHIP"**

AUGUST 28, 2010
I-40 exit 69



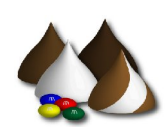

FIRST UNITED METHODIST CHURCH
10TH STREET AND GARY BOULEVARD
CLINTON, OKLAHOMA

Registration: 9:30 a.m -- Seminar: 10:00 a.m.
Two outstanding guest speakers (birth sisters) on
"LEADERSHIP"
Hot Luncheon ... \$10.00 RSVP

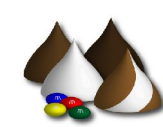


Tillie, the waitress is back. Informative & Fun Meeting --Traditional Silent Auction

**DISTRICT IV LEADERSHIP
ESA MELTS YOUR HEART**



**Saturday, September 18, 2010
Greiner School for the Handicapped
10 SE B Avenue
Lawton, OK 73501**



**Registration 9:30 AM---Meeting 10:00 AM
Lunch: 12:00 PM Cost \$8.00**

Come join us for a day with friends and some fun.

Directions: Take the exit for Gore Blvd. That will take you west. Turn right onto Gore & follow Gore to Wallock & turn south (or left) onto Wallock. Stay on Wallock to B Ave. The school will be in front of you on the corner. If you need further assistance call Nancy Baucom, (580) 512-6047.

**Epsilon Sigma Alpha International
67th Annual State Convention Final Report
2010**

Income

Tulsa Area Council Convention Fund Loan	\$ 984.00
State Loan/members fees	\$ 1,097.50
Program Ads	\$ 1,250.00
Charm Sales	\$ 473.00
Tote Bags	\$ 212.50
State Council Mtg. Sales	\$ 372.00
Decoration Sales	\$ 400.00
Convention Registrations	\$ 15,871.00
Hospitality Room	\$ 451.00
Road Show sales credit	\$ 82.60
Total Income	\$ 21,193.60

Expenses

Tulsa Area Council Conv. Fund Loan	\$ 984.00
State Loan payment	\$ 1,097.50
Charms	\$ 394.00
Tote Bags	\$ 299.00
Decorations, favors, installation state	\$ 568.36
Hospitality	\$ 337.18
Convention programs	\$ 292.50
Posters	\$ 351.00
Candidates Reception and Open House	\$ 192.79
Gratuities	\$ 150.00
Radisson Hotel	\$ 14,463.22
Registration Refunds	\$ 1,370.00
Misc	\$ 3.00

Total Expenses **\$ 20,502.55**

Total Profit **\$ 691.05**

Chapter Chatter

Beta Psi #4098 Clinton

What a busy spring and summer!

Deb's convention, "ESA ... It's In The Bag" was a super one. Well planned. We were appreciative to bring home numerous awards that were on display at our Founder's Day Banquet. During the Founder's Day Banquet the Woman of the Year was announced as Carrie Willingham with John McCauley receiving the Zeus Award. Keeping with our chapter president, Doris Cook's theme and state president, Jacque's theme, the dining hall was decorated with articles and music of the 50's. The Mistress of Ceremonies, our own Vicki Donley researched the fifties and developed a game of such. Contestants Cork Ross, Earl Agan, John McCauley and George Barton gave her quite a time ringing in early on their buzzers, laughing and all kinds of goings on.

Since Carrie, outgoing president's theme was "ESA . . . Ladies Wear Many Hats," a Roast included members putting various hats upon her head as the stack grew with the razzing of her highs and lows.

Kudos to Beta Psi's Nellrita Barrick who served as the 2009-2010 Circle of Life chairman. It was a thrill for Beta Psi members to join in on the Parade of Placards and rejoiced with everyone in attendance of the grand total of \$506,352.05 donated to St. Jude Children's Research Hospital during her tenure.

Speaking of St. Jude, the number of Beta Psi volunteers continues to grow. Dividing up an entire day hosting the St. Jude Dream Home tour for the morning shift were members: Joy Agan, Joyce Lacey-Kenney, Synovia Lemmings and Vicki Donley with the afternoon/evening shift manned by Nellrita Barrick, Linda Southerland, Doris Cook and Carrie Willingham. Those working the Fox 25 Telethon and greeters to the winning couple at the Dream Home were Linda, Carrie, Synovia, Linda and Nellrita.

We have had summer socials in June, July and August. Also, some fun times were had as a group of us went to the movie together. Letters to Juliet, was a good love story. July brought about another trip as we boarded the train and traveled to the big shopping outlet in Gainesville, Texas. Starting our new year in September, the yearbooks are now ready (thanks to Linda Southerland) and we are looking forward to the educational programs that are to relate to the Fifties. One can wonder what the RUSH theme will be????

With Rhonda Scott having chemotherapy for cancer of the thyroid and Nellrita's surgery for cancer in the ureter/bladder, we ask that you lift them up in prayers.

To our ESA sisters across this great state, we encourage you to get together a car load of gals and head to Clinton for the District II Leadership Seminar on August 28th. It will be an informative/motivating meeting with some fun included. Hope to see you here.

Agape'
Nellrita Barrick

Kappa Theta #5414 Guthrie

Greetings to our ESA sisters. I hope everyone is having a wonderful summer and I'm sure that everyone is staying busy. I know that the ladies of Kappa Theta have had a busy summer so far.

Kappa Theta partnered with local Guthrie businesses on April 8th and held our first annual "Taste of Guthrie and ESA" fundraiser. Each member made a dish and local businesses brought food that they prepare in their restaurants for the public to sample. It was a huge success and we have been approached by some of the businesses as well as the public about holding one again in the fall. We as well as our partners had a great time.

We also spent April helping Jacque get ready for her installation as the incoming State President. Members attending State Convention and serving as honor guards for Jacque were Libby Zaage, Sylvia Ochs, Marie Thomas and Connie Johnson. Ladies serving in the honor guard for Jacque lighted the path for her with lighted pink savor swords which everyone thought were cool. Our own Shelly Labus was also installed as the new Corresponding Secretary. A highlight of State Convention was the play that our new officers performed for us. Way to go Ladies! You all did a great job. Kappa Theta also brought home several awards at State Convention including Brittany Labus with 1st place for "What ESA Means To Me" one year or less and Toni Morrow winning 2nd place with her essay "What ESA Means To Me" one year or more. Kappa Theta also won 2nd place in Outstanding Chapter, Sr. High Youth, Philanthropic and State Project. We're proud of all of our new officers and look forward to a great year with you.

Members met at Jane Garrard's house for our May business meeting. Our meeting was a brief one as we had tornado warnings all around us. We did enjoy Jane's hospitality and got business taken care of very quickly that night. State President Jacque Edwards gave a report on our State Convention that evening.

Administrative Assistants Libby Zaage and Connie Johnson attended a training session for board members hosted by State President Jacque Edwards at Johnnie's Restaurant in Edmond on May 15th. They enjoyed meeting other ladies serving on Jacque's board for the upcoming year and felt the meeting was very informative.

Kappa Theta members met on June 3rd at the Victorian Tea Room in Guthrie for our annual Founders Day Banquet and installation of new officers for 2010-2011. We were honored to have Dr. Billye Peterson with us to present awards that members had won at State Convention. Guests Illene Edwards, Erick Zaage and Doug Garrard were also in attendance. Libby Zaage was installed as our new chapter President, Marie Thomas - Vice President, Connie Johnson - Secretary, Jacque Edwards - Treasurer, Sylvia Ochs - Educational Director and Brittany Labus our new Parliamentarian. Installing officer was State President Jacque Edwards.

Another training session was also held on June 5th at the Stables Cafe in Guthrie for other members of the General and Executive Board by State President Jacque Edwards. Those in attendance from Kappa Theta were Sylvia Ochs and Marie Thomas.

June 19th was State Council Meeting held in Shawnee. Several Kappa Theta members were in attendance along with guest Skyler Zaage, granddaughter of Kappa Theta's new President Libby Zaage, who is visiting from Texas. I have heard lots of great things about Jacque's 1st State Council Meeting which I did not get to attend due to illness. I have to say that we are very proud of Jacque and the great job that she is doing.

We met June 15th at President Libby's house for our business meeting. She prepared a wonderful dinner for us and we had a guest speaker Amy from Daniel's Drug speaking on Women's health issues. What an informative educational! Jacque was also presented Kappa Theta's Woman of the Year Award and President's Award on behalf of former President Marie Thomas by Connie Johnson. Congratulations Jacque! Those awards are well deserved and we're proud of you and all of your hard work.

(Cont. Page 24)

Members met at Zios in Bricktown for dinner on Monday evening June 28th. After dinner we rode the water taxi for a tour of Bricktown. Those in attendance were Libby and Skyler Zaage, Sylvia Ochs, Jacque Edwards, Connie Johnson, Jane Garrard and her granddaughter Audrey. We were joined on the boat ride by Doug Garrard and his and Jane's daughter and son-in-law. We had a very relaxing evening and enjoyed our time together.

Several Kappa Theta ladies have worked the open house for the St. Jude Dream Home this month as well as TV day for the Dream Home Give-A-Way. Congratulations to the new home owners. What a worthy cause.

May God Bless each and everyone of you and your families. Have a great rest of the summer Sisters!

Connie Johnson
Kappa Theta Publicity Chairman



Gamma Pi #5091 Inola

Gamma Pi Chapter had it's annual Senior Tea with 34 girls with Mothers, Grandmothers or other special people to share the day with them. Special District Judge Erin Oquin of Rogers County was our guest speaker.

We held our Installation Banquet May 2, 2010. Our New officers for 2010-2011 are President Lisa Zachau; Vice President Bobbie Martin; Secretary Kay Kirkes; Treasurer Ronda Cooksey; Educational Lisa Willhour. We also gave out our awards for Diana and Zeus for their contributions to our community and our chapter.

Our next big adventure will be our 3rd Annual Bunco Tournament August 7, 2010. It keeps getting bigger each year. We have door prizes all through the night and baskets full of lots of goodies for all the winners. We all have fun and we make new friends. Come join in the fun.

Janie Stevens
Publicity Chairman

2010/2011 Chapter Officers
Lisa Wilhour, Ronda Cooksey,
Kay Kirkes, Bobbie Martin and
Lisa Zachau



Alpha Theta #1038 Muskogee

The officers for the 2010-2011 year were installed by Thelma Adcock at our spring banquet in April. They are: Marianne Roberts, president; Ruth Jo Carnagey, vice president; Thelma Adcock, secretary; Marla Watson, treasurer; Sally Thomas, educational director; and Chris Roberts, parliamentarian. Service Awards were presented to Wanda Martin, 5 years; Pat Hollingshead, 35 years; and Billye Lackey, 40 years. A Jewel Pin ceremony was performed for Marla Watson and Kara West. Four members received Pallas Athene Awards: Maggie Sellers and Sally Thomas, 1st and 2nd degree; Peggy Pate, 2nd and 3rd degree; Chris Roberts, 4th degree.

We celebrated our first meeting of our new year with a salad supper and the revealing of our secret sisters for the preceding year. Chris Roberts presented some highlights of the annual Oklahoma State ESA Convention, attended by Chris, Marianne Robbins, Joan Eaton, and Peggy Pate. Awards received by the chapter include: Certificate of Achievement and 3rd Place Award for contributions to the State Project Fund; the Norma Moore Award for ranking 3rd in contributions to the ESA Foundation; Ruth Jo Carnagey, Gold Link Certificate and Certificate of Achievement for Educational Directors; and Marianne Robbins, Certificate of Achievement from the Association of the Arts.

Although we do not have business meetings during the summer, we continue our interaction with social activities. Several members participate in monthly Bunco games throughout the year and ESA is always part of our discussion.

Peggy Pate, Publicity Chairman

Delta Kappa #3358 Norman

The summer is quickly passing. Delta Kappa suspended their meetings in May for the summer. By the time you read this it will be almost time to start again. Even though the meetings were suspended for the summer, the activities continued. The chapter had a garage sale in June to benefit Easter Seals; many of the members worked the St. Jude Dream Home; and several helped James' (Karen Nix's spouse) celebrate his 75th Birthday. During the summer, we stay very busy. The gift-wrapping will start pretty soon.

We hope everyone is recovering from the May 10th Tornadoes and the May floods. If you were involved in either, we pray that things are improving for you and wish you the best. Betty McCallister and Pat Langdon had damage to their homes.

Several members will celebrate or have celebrated their 50th Wedding Anniversary this summer: Pat and Ron Langdon; Nancy and Wayne Buck; Gwynn Nell and Dan Swanson. September 30 would have been the 50th for Vivian and Wilbur Gibson. Even though Wilbur is not here.....Vivian says she is celebrating anyway. Janice and Gary Shockley will celebrate their 45th.

Chapter President, Joyce Gibson and Chapter Parliamentarian, Vivian Gibson attended International Convention in Bloomington, MN.

Our first meeting will be Tuesday, September 7, 2010, because of the Labor Day Holiday. Our regular meetings are the first and third Monday.

Vivian Gibson

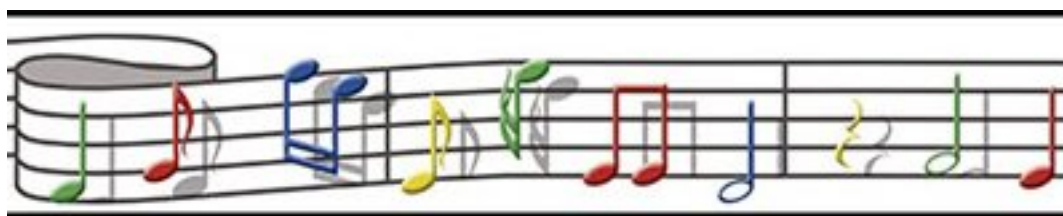
Zeta Gamma #4253 Shawnee

WOW...what a great year the Zeta Gamma sisters had. Our accomplishments were rewarded with many recognitions at the state convention with our past chapter president Mary Toole. Our proudest award was 1st Place for Outstanding Chapter. Way to go Zeta Gamma!

This year started off on a "safari" with Maxine Wheelan as our guide as she installed Robbin Brown as the new chapter president. Along on the safari was Gwen Beasley, vice president; Lola Jaegers, treasurer; Linda Voss, secretary; MaryAnn Jones, philanthropic; Mary Toole, educational, and Lora Thompson, parliamentarian. Joining the safari were guests State President Deb Hughes, Joyce Gibson, Vivian Gibson, Gwen's daughter Shannon & granddaughter Jylen, and guest of Mary Toole, Shala. Gwen Beasley received her 20 year pin and Robbin was awarded "Woman of the Year". She was so surprised and honored she had everyone crying. Zeta Gamma has already been busy with a garage sale and providing lunch for the June State Council meeting members. Various items were donated to St. Paul's United Methodist Church to help woman and children start out on a new life and many sisters volunteered at the Dream Home in Edmond.

Join us next time to see where our "safari" takes us through ESA!

Robbin Brown



Beta Gamma #0391 Tulsa

Well, now, it has been all about transitions for our chapter members. Some of us have seen changes with family: a bar mitzvah or a wedding or yet another surgery. Some of us have seen changes in our own lives: a loss of a dear loved one, a job change, or far less to do now that an office we held ended. There have been a lot of changes for some and few, if any, for others. What is the glue? How do those of us who have such different things going on still get on with our sisters who are managing the same 'ol, same 'ol? It's ESA, of course! We gather and make tray favors here, or work lots and lots on a Dream Home there (Sure you'll see this elsewhere in the PJ, but Tulsa Stone Canyon SOLD OUT raising over \$800,000!! Woo Hoo!) Maybe we gathered to watch a movie or visit Emergency Infant Services. As much as things change some remain the same—like most of us had to admit when we told each other one of our blessings lately—even though we grouse and grumble it sure feels good to get together with our fellow ESA'ers and work/play/relax/gossip/gripe/fight/chill/be happy. Don't know about you, but a gathering of our ESA chapter is the next most comfy place to be, next to being with family.

Peggy Hughes is our Chapter President this year. She suggested we take a look at the many opportunities to volunteer in Tulsa. So, watch for our post in the PJ this year, we'll tell you all about the fun things we've learned

Connie Bartlett
Publicity Chairman

Gamma Delta #0702 Tulsa

The sisters of Gamma Delta had lunch at the Pink House in Claremore, OK on April 17th, 2010. After the wonderful meal, there was a short ceremony for the Installation of new officers. Chapter members gathered on April 25th, 2010 for a social at Clarehouse in Tulsa, OK. A tour of the facility was given, and attendees explored the beautifully landscaped gardens. Gamma Delta also put in many volunteer hours during the months of May and June. This time was spent supporting the events associated with the St. Jude Dream Home in Owasso, OK. The Gamma Delta sisters volunteered in the office, spent time working in the home, selling tickets, and answering phones at the telethon.

Gamma Delta has many upcoming events also planned. On July 10th, 2010, the sisters of Gamma Delta will have a garage sale, with proceeds going to the Firefighters Burn Camp. Gamma Delta will also be having "Christmas In July" on July 19th, 2010. This event will include a salad supper, followed by an Educational. The evening will conclude with a gift exchange between members. --- Jessica Greshens

Omega Pi #3832 Tulsa

Omega started off our new year with a wonderful installation dinner at Tiamo's. Marge Goodno was gracious enough to accept the office of president again and her new theme is "ESA Count Me In". We all told her she would have our support.

Our social in April was a beautiful baby shower for Jenny Lizama who is expecting a baby girl in May. This little girl will be the best dressed in Tulsa and Jenny will have to change outfits every hour to get through all the outfits she got.

State Convention was attended by Liz Martin, Marge Goodno, Helen Stuart and Mitizi Joy. We received the Gold Seal Award and Marge Vilven Grant's Educational Program got an Honorable Mention Certificate and we were well represented in the Circle of Life (St. Jude) donation. I understand Marge again contributed to the success of the silent auction on Friday night. Don't know if this was Long Island Tea bidding again or not.

On May 16th five of us attended the Founders Day Tea where Mary Ann Emery and Marge Vilven received their 15 year pins and Betty Montgomery and Marge Vilven received their 2nd degree Pallas Athena awards. Congratulation ladies. Then on May 19th Jenny gave birth to Lizette weighing in at 7 lbs. 9 oz. and beautiful. Mom, Dad and baby are doing fine. Congratulation Lizamas.

We made Easter baskets and Mother's Day corsages for our nursing home people. We put in the weekend of June 5 and 6th working the open house for the St. Jude's Dream Home and also worked the telephon on Sunday the 27th.

We were hostess for TAC meeting in June at the Community Food Bank and we fixed a brown bag lunch, which turned out to be great as we ended up having a picnic outdoors. We all brought items for the food bank.

Some of our members have already started vacations. Donna Crawford and husband Mel drove to Seattle to take a cruise to Alaska and when they got back their car had been broken into and they had a busted window and since it was May 31st Memorial Day they couldn't find anyone to fix it, and they needed to get home, so Mel just went in the Honda dealer and brought a new car. Wow talk about an expensive window.

That is about all to report except we are so thrilled our president, Marge has decided not to move to Houston with Citgo and stay in Tulsa. Hope everyone has a great summer.

Joan Nightingale, Publicity Chairman

Tulsa Area Council Jessica Greshens

Tulsa Area Council has just completed an incredibly successful fundraising event for St. Jude's Children's Research Hospital. This fundraising project was a series of events, including: the building of a new Dream Home in Owasso, OK, selling tickets for the Dream Home, and volunteering hours to work in the home and in the office. This project concluded on June 27th, 2010 with a telethon and the give-a-way of the Dream Home. Over \$800,000 was raised for St. Jude.

Members of Tulsa Area Council will be hosting a Bunko bash on July 23rd, 2010. This is a fundraising event, with proceeds going to the Tulsa Area Food Bank. Attendees are also encouraged to bring non-perishable food items to donate to the Tulsa Area Food Bank.

Pull Tabs for Ronald Mc Donald House

Maxine Wheelan delivered the many pull-tabs from soft drink cans and other cans to the Ronald McDonald House in Oklahoma City on May 3rd. The Director is Herb Gilkey and a very nice man. The pull-tabs came from Janette Murray, Rosalie Griffith, Nancy Buck and several others that were at State Convention. Ronald McDonald House appreciates all they can get as it helps to buy additional items that are not budgeted by the state.



Oklahoma State Council 68th Annual Convention

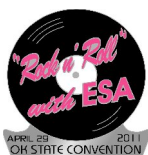
"Rock n' Roll with ESA"

April 29, 30 & May 1, 2011

Clarion Meridian Hotel & Convention Center – 737 S. Meridian - Oklahoma City

Phone: 1-800-784-7830 or 405) 942-8511 – Registration Deadline April 15, 2011

MEMBER NAME:		MEMBER NUMBER:	
ADDRESS:		CITY, STATE, ZIP:	
PHONE:	FAX:	EMAIL:	
CHAPTER NAME:	CITY:	CHAPTER NUMBER:	
CHECK ALL THAT APPLY:			
<input type="checkbox"/>	CHAPTER PRESIDENT	<input type="checkbox"/>	1ST TIME CONVENTION GOER
<input type="checkbox"/>	EXECUTIVE BOARD MEMBER	<input type="checkbox"/>	GENERAL BOARD MEMBER
<input type="checkbox"/>	CURRENT/PREVIOUS IC OFFICER	<input type="checkbox"/>	CURRENT/PREVIOUS ESAF BRD
<input type="checkbox"/>		<input type="checkbox"/>	2010/2011 PLEDGE
<input type="checkbox"/>		<input type="checkbox"/>	SOONER SENIORETTE
<input type="checkbox"/>		<input type="checkbox"/>	GUEST
SPECIAL DIET MENU/MEDICAL REASONS ONLY** CONTACT: **RAMONA PAINE –Convention Chair 580) 242-0741 604 W. Wheat Capital Rd., Enid 73701 (Ramona.Paine@gmail.com)			
<u>MEN'S REGISTRATION:</u>			
NAME:		HUSBAND/ESCORT OF:	
<u>DESA/ELAN REGISTRATION:</u>			
NAME:		ESA MEMBER/CHAPTER:	
<u>GUEST REGISTRATION:</u>			
NAME:		GUEST OF:	
CHECK ALL THAT APPLY			
<input type="checkbox"/>	MEMBER'S FULL REGISTRATION FEE POSTMARKED BY APRIL 15, 2011 includes Friday night mixer, general assemblies, workshops, Recognition Luncheon, Banquet & Brunch		\$85.00
<input type="checkbox"/>	MEN'S REGISTRATION FEE includes Friday night mixer and Banquet		\$40.00
<input type="checkbox"/>	DESA/ELAN REGISTRATION includes Friday night mixer, general assemblies, workshops, Recognition Luncheon, Banquet & Brunch		\$85.00
<input type="checkbox"/>	BANQUET GUEST FEE		\$40.00
<input type="checkbox"/>	LATE FEE		\$25.00
<input type="checkbox"/>			
TOTAL AMOUNT ENCLOSED			



Enclose Check Payable to:

2011 ESA State Convention Fund

Mail Registration form and payment to: Mary Ann Jones, Registration Chair

536 N. Beard MaryAnn74801@aol.com

Shawnee, OK 74801 Phone: (405) 273-3459

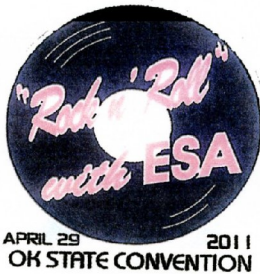
CANCELLATION: If you find it necessary to cancel this registration, the full amount less a \$15.00 processing fee will be refunded if your written cancellation is postmarked no later than the April 15, 2011 deadline. Registrations postmarked after April 15, 2011, will be assigned seating where vacancies exist. We cannot guarantee that late registrants will be seated with their chapters after April 15, 2011.



BY CHOICE HOTELS

CLARION MERIDIAN HOTEL & CONVENTION CENTER

737 S. Meridian Ave. (I-40 & Meridian)
Oklahoma City, OK 73108



April 29, 30 and May 1, 2011

For Reservations call:
(405) 942-8511 * (800) 784-7830

Reservations Online

Visit our website www.clarionokc.com

Click on **Special Rates**, and then **Group Reservations**

Enter group password: **grp10110** to proceed
and mention

EPSILON SIGMA ALPHA

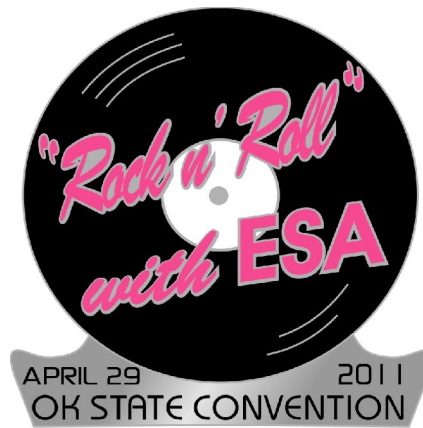
for the

Convention room rate of \$99 plus tax per night

Parking is Free
Free Deluxe Continental Breakfast

RESERVATIONS MUST BE MADE BY APRIL 1, 2011

Convention Program Ads



Reserve your space now for a 2011 Oklahoma State Convention program ad! It is never too early to send in your camera-ready copy for this great program.

Space available goes for the bargain prices as listed:

Full page	- 100.00
$\frac{3}{4}$ page	- 75.00
$\frac{1}{2}$ page	- 50.00
$\frac{1}{4}$ page	- 25.00
Business card size	- 12.50

Honor your chapter, your secret sister, your boss, the elected Board members – you can put a smile on anyone's face with a convention program ad.

Send your ad to: Lola Jaegers
13 Northridge
Shawnee, OK 74804

Summary of Contests, Chairmen, Guidelines and Deadlines

<p style="text-align: center;">ASSOCIATION OF THE ARTS Peggy Pate assocofthearts@oklaesa.org April 1 peggybate9@sbcglobal.net</p>	<p>Entry forms for Divisions I through VI - Poetry/Literature & Music Entries submitted to chairman by April 1. Other items brought to convention.</p>
<p style="text-align: center;">AWARDS Judy Cravens awards@oklaesa.org April 1 timcravens@aol.com</p>	<p>“What ESA Means to Me” essay. Two categories (members of less than one year and members of more than one year) submitted to chairman by April 1. Service Awards, Pallas Athene and First Pearl submitted to chairman by April 1.</p>
<p style="text-align: center;">CIRCLE OF LIFE Amber Alexander circleoflife@oklaesa.org April 1 amberjeanhatco@hotmail.com</p>	<p>Total money donated, ALSAC Events, Radiothons, and Total money donated for Special Events. Information from Service Report and ESA Headquarters.</p>
<p style="text-align: center;">DIANA Joy Agan diana@oklaesa.org March 1 eaja1116@prodigy.net</p>	<p>Compiled entry. Guidelines and packet kit available from ESA Headquarters and at www.oklaesa.org/contests.htm</p>
<p style="text-align: center;">DISASTER FUND Deb Hughes jrpastpresident@oklaesa.org April 1 debokesa@hotmail.com</p>	<p>Total money donated; 15 or less/16 or more members; Information from Service Report and ESA Headquarters report.</p>
<p style="text-align: center;">DISTINGUISHED ATHENIAN Joyce Gibson secondvp@oklaesa.org April 1 joiesa02@aol.com</p>	<p>Educational Director nomination, submitted by chapter. To be eligible for this award the Educational Director must have rendered some important educational service to her chapter, her community or to her state ESA Council; contributing notable value to her state’s educational expansion.</p>
<p style="text-align: center;">EASTER SEALS Marcie Lucas-Ellington easterseals@oklaesa.org April 1 marcieah@yahoo.com</p>	<p>Total money donated; From Service Report or Chairman’s records.</p>

<p>ESA FOUNDATION Rita Hains esafcounselor@oklaesa.org April 1 Rita-hains@ouhsc.edu</p>	<p>Total money donated excluding Turn-Around Fund; total money through Turn-Around Fund only. Information from ESA Foundation monthly report.</p>
<p>GOLD LINK Joyce Gibson secondvp@oklaesa.org April 1 joies02@aol.com</p>	<p>Six timely Educational reports.</p>
<p>GOLD SEAL (Education Book) Joyce Gibson secondvp@oklaesa.org April 1 joies02@aol.com</p>	<p>Compiled entry.</p>
<p>MEMBERSHIP Mary Johnson membership@oklaesa.org February 28 Mary.Johnson@cepllc.com</p>	<p>Most New Members and Membership Growth awards. Taken from ESA Headquarters reports.</p>
<p>OUTSTANDING CHAPTER Robbin Brown outstandingchapter@oklaesa.org April 1 robbesa4@tds.net</p>	<p>Accumulated points reported from contest chairmen and State/District secretaries; IC/State Treasurers; State President/1st VP/2nd VP</p>
<p>OUTSTANDING YOUTH Carrie Willingham outstandingyouth@oklaesa.org March 1 (no email)</p>	<p>Compiled entry due March 1. Guidelines and packet kit available from ESA HQ and at www.oklaesa.org/contests.htm . State recognition of chapters that participated in their community due March 1.</p>
<p>PHILANTHROPIC Donna Shook philanthropic@oklaesa.org April 1 rodshook@windstream.net</p>	<p>Total donated monies, goods, miles and hours. 15 or less/16 or more members; From Service Reports.</p>
<p>PUBLICITY Joyce Lacey-Kenney publicity@oklaesa.org April 1 joycelacey-kenney@att.net</p>	<p>Compiled entry.</p>
<p>STATE PROJECT Charlene Law projectdirector@oklaesa.org April 1 cjl41968@yahoo.com</p>	<p>Total donated monies, goods, miles and hours. 15 or less/16 or more members; From Service Reports.</p>

<p style="text-align: center;">SCRAPBOOK Kay Brader scrapbook@oklaesa.org March 1 dbrader@sbcglobal.net</p>	<p style="text-align: center;">Scrapbook materials for one page in State Scrapbook.</p>
--	--

GENERAL CONTEST INFORMATION AND GUIDELINES

All entries are sent to the chairman of each respective contest.

- State dues must be paid on or before January 1 to be eligible for state contests and voting privileges.
- New chapters are not required to pay state dues until the May 1 following the first anniversary of their charter date.
- Contest entries and materials must be postmarked on or before **March 1** to be eligible for DIANA, and Outstanding Youth.
- All other contest entries and materials must be postmarked on or before **April 1**.
 - Scrapbook will be for display only at convention.
- First, Second, and Third Place Certificates will be awarded. The decision of the judges will be final.
 - All contests with IC guidelines will follow those guidelines.



EDUCATIONAL REPORT FORM

Chapter Name and Number: _____ State: _____
City: _____ Meeting/Presentation Date: _____
Yearly Theme: _____
Topic of this Program: _____

METHOD OF PRESENTATION (Check all that apply)

- Member's Oral Report (name) _____
- Guest Speaker (who/title) _____
- Visual Aid Program (kind and type) _____
- Field Trip (where) _____
- Reference Listing (book or magazine) _____
- Other (explain - internet, pamphlets, etc.) _____

SUMMARY: (Briefly summarize the program and attach a more complete narrative or outline stating all major points emphasized so the program can be fully understood.)

COMMENTS BY THE EDUCATIONAL CHAIR: (Value to chapter/community, general comments about the presentation and chapter discussion.)

CHAPTER EDUCATION CHAIR:

Name: _____
Address: _____
City: _____
State and Zip Code: _____
(Revised March 2003)

**PLEASE SEND TO:
STATE EDUCATIONAL CHAIR:**

Name: **Joyce Gibson**
Address: **P.O. Box 179**
City: **Norman**
State and Zip Code: **OK 73070**
Email: joiesa02@aol.com
Or: [secondvp @ oklaesa.org](mailto:secondvp@oklaesa.org)



OKLAHOMA STATE COUNCIL
NOMINATION FORM
FOR 2010-2011 OFFICERS

Please complete the nomination form and submit to the 1st Vice-President before March 1, 2011. All candidates must send their written consent, qualifications and a picture to the 1st Vice- President **BEFORE** March 1, 2011. The candidates for state offices will be presented at the March State Council meeting and their qualifications and picture will be published in the April/May issue of *The Petticoat Journal*.

SECOND VICE PRESIDENT

Name _____ Chapter _____
Town _____ Acceptance Attached _____
Nominee has been notified of nomination _____ Yes _____ No

RECORDING SECRETARY

Name _____ Chapter _____
Town _____ Acceptance Attached _____
Nominee has been notified of nomination _____ Yes _____ No

TREASURER

Name _____ Chapter _____
Town _____ Acceptance Attached _____
Nominee has been notified of nomination _____ Yes _____ No

PARLIAMENTARIAN

Name _____ Chapter _____
Town _____ Acceptance Attached _____
Nominee has been notified of nomination _____ Yes _____ No

PROJECT DIRECTOR

Name _____ Chapter _____
Town _____ Acceptance Attached _____
Nominee has been notified of nomination _____ Yes _____ No

PETTICOAT JOURNAL EDITOR

Name _____ Chapter _____
Town _____ Acceptance Attached _____
Nominee has been notified of nomination _____ Yes _____ No

Nominating Chapter Name & #: _____ **City:** _____
Contact: _____

Mail to: Gwynn Nell Swanson
2406 CR 1260
Blanchard, OK 73010
(405) 485-2921

Email: gnswanon@pdi.net
Or: firstvp@oklaesa.org



Oklahoma State Council Service Report

Instructions

Keep a copy of this report for your Chapter files. Mail a copy to the Philanthropic Chairman. If you need assistance filling out this form, please call or email Philanthropic Chairman:

Donna Shook
13992 S. 261st E. Ave
Coweta, OK 74429
H: 918) 486-7629
C: 405) 650-7005
philanthropic@oklaesa.org
rodshook@windstream.net

If this report includes information regarding the Circle of Life, DIANA Award, Easter Seals, ESA Disaster Fund, ESA Foundation, Outstanding Youth, or State Project, please send a copy of this report to that respective chairman. Contest Chairs will not be exchanging information.

Circle of Life Chairman

Amber Alexander
P.O. Box 35
Kiowa, OK 74553
C: (918) 916-0138
circleoflife@oklaesa.org
amberjeanhatco@hotmail.com

DIANA Chairman

Joy Agan
1116 Sherwood
Clinton, OK 73601
H: 580) 323-0743
C: 580) 445-1134
diana@oklaesa.org
eaja1116@prodigy.net

Easter Seals Chairman

Marcie Lucas-Ellington
4124 SE 24th St.
Del City, OK 73115
H: 405) 672-6935
easterseals@oklaesa.org
marcieah@yahoo.com

ESA Disaster Fund Chairman

Deb Hughes
2817 S .Hudson Ave
Tulsa, OK 74114
C: 918) 269-3857
jrpastpresident@oklaesa.org
debokesa@hotmail.com

ESA Foundation Counselor

Rita Hains
106 E. 13th St
Sand Springs, OK 74063
H: 918) 241-6736
C: 918) 760-4661
esafcounselor@oklaesa.org
Rita-hains@ouhsc.edu

Outstanding Youth Chairman

Carrie Willingham
203 Regency
Clinton, OK 73601
H: 580) 323-1606
C: 580) 309-4678
(Contact: Linda Southerland)
lsoutherland43@gmail.com

State Project Director

Charlene Law
25206 S. Shepherd Dr.
Claremore, OK 74019
H: 918) 266-0185
C: 918) 629-4990
projectdirector@oklaesa.org
cj41968@yahoo.com

OTHER SERVICE PERFORMED IN THE NAME OF ESA:

Please list the full names of the organizations receiving aid through ESA and a brief explanation of what was done in order to have hours, monies and monetary value counted. You may attach an additional sheet if more space is needed to provide this information. Be sure to include this information in your Chapter Minutes.

Chapter Name & Number:		City:		
Chapter Contact Person:		Phone:		
Contact Address:				
Report for the Month(s) of:				
SERVICE PROJECTS	Actual Hours	Actual Money Donated	Value of Donated Goods *	Actual Mileage
Circle of Life				
DIANA Award				
Easter Seals				
ESA Disaster Fund				
ESA Foundation				
Hope Projects – Hats				
Baby Blankets				
Clothing				
Outstanding Youth Award				
State Project -- provide details on page 2				
District ___ Project				
Chapter Projects --List each project and continue on separate page as needed				
Other (List – continue on separate page as needed)				
Totals				

* "Value of Donated Goods" amounts are estimated by figuring 15% of the retail value on used items and full retail value on new items.

Chapter Name & Number:	
Report for the Month(s) of:	

State Project Details

Name of Sponsored Child	Actual Hours	Actual Money Donated	Value of Donated Goods	Actual Mileage

Donations made directly to schools:

Name of School	Actual Hours	Actual Money Donated	Value of Donated Goods	Actual Mileage

Donations made directly to the State Project Fund:
(checks payable to Oklahoma State Council of ESA, State Project Fund)

Actual Hours	Actual Money Donated	Value of Donated Goods	Actual Mileage

	Actual Hours	Actual Money Donated	Value of Donated Goods	Actual Mileage
Totals				

Chaplain's Report Form - 2010-2011

Name of person to receive card _____

Address _____

City _____ State _____ Zip _____

Chapter _____

Occasion: Birth (boy/girl) _____

Relationship to member _____

Death (relationship to member) _____

Death of member _____

Illness (nature of) _____

Marriage _____

Other _____

Information received from _____

Chapter _____

If you know of someone who needs a card, please contact me or fill out the form and send it to me.

Vivian Y. Gibson, State Chaplain
2535 Boxwood Avenue
Norman, OK 73072
H (405) 364-0484
tigervip60@aol.com

**Epsilon Sigma Alpha International
67th Annual Oklahoma State Convention
First General Assembly Minutes
Saturday, May 1, 2010**

Call to seating for the First General Assembly at 8:25 a.m. was by Sooner Seniorett, Linda Voss.

Opening ceremony, including the Chapter Banner and Flag Presentations, was conducted by Sooner Senioresses Robbin Brown and Linda Voss.

President, Deb Hughes declared the 67th Annual Oklahoma State Convention of Epsilon Sigma Alpha in session. The Opening Ritual was recited. Chaplain, Mary Toole read the thought for the day.

The host chapters Beta Gamma, Gamma Delta, Kappa Alpha, Omega Pi, of Tulsa, Eta Mu, Owasso, Alpha Rho, Broken Arrow and Theta Sigma, Jenks were recognized. Convention Chairman Judi York gave the welcome.

Judi York introduced Radisson Hotel Representative Brandi Ohls, who welcomed ESA Oklahoma State Council for the weekend.

President, Deb Hughes, presented the head table and introductions including special guests Vickie Farris, IC Recording Secretary, Rickie Brown, IC Senior Membership Chair from California and Sherry Day, IC Junior Membership Chair from Arizona.

St. Jude patient Haley Hubbard and her mother, Ty Herdade gave an enlightening presentation of Haley's 14 years with St. Jude. She plans to become a Physicians Assistant in December.

Parliamentarian, Linda Southerland, read the Convention Rules. She moved that the Convention Rules be adopted as printed in the Convention Program. Maxine Wheelan, Delta Chi, Midwest City seconded. Motion carried.

Convention Co-Chair Cheryl Young moved that the Convention Program be adopted as printed and distributed to the paid registrants of this convention. Jeanne Meyer, Delta Lambda, Muskogee seconded the motion. Motion carried.

The committee to read the minutes of the 67th Oklahoma State Convention is Chairman Jeanne Meyer, Maxine Wheelan, Judy Cravens, and Billie Fritch.

The committee to read the minutes of the March State Council meeting was Chairman, Patsy Timmons, Linda Southerland, and Peggie Sprinkle. Patsy Timmons reported the minutes were correct as printed.

Tina Davenport-McKamie read regrets received from: Ardyce Briggs, Dana Chase, Dorothy Drumm, Charlene Harrell, Wanda Lucas, Billie Linville, Jamie Atchison, IC President and B.J. Clark. ESA Executive Director.

Amber Alexander, Credentials Chairman gave the following credentials report:

Number of Chapters: 39
Chapters in Attendance: 29
Eligible Votes: 54
Total Votes: 71

Amber Alexander moved adoption of the credentials report; seconded by Peggy Hughes, Beta Gamma, Tulsa. Motion carried.

Recording Secretary Charlene Law called roll.

2010 Registration Chairman Sandra Saunders presented the convention registration report: 148 members, 12 spouses, 8 guests, 168 total registrations.

Treasurer, Joyce Gibson, presented the final Treasurer's Report.

Balance transferred from 2008-2009: \$4,758.05
Receipts: \$11,949.04
Disbursements: \$11,150.77
Balance May 1, 2010: \$5,556.32
 General Fund: \$3,800.42
 Speaker's Fund: \$1,214.19
 IC Campaign Fund: \$219.36
 Doer's Fund: \$322.25
 Certificate of Deposit as of 04-3-2010: \$4,010.94

State Project Director, Robbin Brown, presented the State Project Fund Disbursement Report.

Balance forward 2008-2009: \$6,102.60
Receipts \$4,662.25
Disbursements: \$6,617.38
Balance as of April 29, 2010: \$4,145.47
 Allocations for 2009-2010: \$6,066.69
 Oklahoma School for the Deaf, 127 Students: \$3,800.00
 Oklahoma School for the Blind, 98 Students: \$2,266.69

First Vice President/Nominating Committee Chairman, Jacque Edwards, introduced and thanked the members of the nominating committee: Lora Thompson, Aletha Bolt, Sue Knight and Peggy Pate.

The candidates for the 2010-2011 Oklahoma State Council were presented.

President - Jacque Edwards, Kappa Theta, Guthrie
1st Vice President – Gwynn Nell Swanson, Delta Kappa, Norman
2nd Vice President – Joyce Gibson, Delta Kappa Norman
Recording Secretary – Linda Southerland, Beta Psi, Clinton
Parliamentarian – Peggy Sprinkle, Beta Gamma, Tulsa
Treasurer – Tina Davenport McKamie, Beta Iota, McAlester
State Project Director – Charlene Law, Gamma Delta, Tulsa
Petticoat Journal Editor – Mary Adams, Gamma Pi, Inola
Corresponding Secretary – Shelly Labus, Kappa Theta, Guthrie
Senior Past President, Bunnie Sullins and Junior Past President, Deb Hughes were introduced.

Lora Thompson, Zeta Gamma, Shawnee, moved to elect these candidates by acclamation. Billye Peterson, Gamma Zeta, Edmond seconded the motion, motion carried.

The District Coordinators will be Nellrita Barrick, District II; Rosemary Benning, District III; Nancy Baucom, District IV and Jeanne Meyer, District V.

President, Deb Hughes, opened the floor for nominations for the 2010-2011 Nominating Committee. As First Vice President Gwynn Nell Swanson, Delta Kappa, Norman, will chair the committee and Deb Hughes, Jr. Past President will serve on the committee. The nominees are Robbin Brown, Zeta Gamma, Shawnee, Lisa Zachau, Gamma Pi, Inola, June Miller, Beta Iota, McAlester, and Billye Peterson, Gamma Zeta, Edmond. Gwynn Nell Swanson moved to close nominations and elect by acclamation, motion was seconded by Lora Thompson, Zeta Gamma, Shawnee, motion carried.

Vickie Farris IC Representative welcomed attendees to the convention and encouraged all members to promote Epsilon Sigma Alpha in every way they can.

Rita Hains, Membership Chair introduced new members pledged this year. There were three new pledges in attendance at this convention. Rita announced winners for Membership Contests.

Margaret Kramer, Outstanding Youth Chair presented the Jr. High Outstanding Youth winner Zach Garner sponsored by Beta Psi, Clinton and Senior High winner Conner Davey, sponsored by Delta Kappa, Norman.

Sue Patterson, DIANA Chair presented the DIANA Awards. The winner was Linda Butler, submitted by Delta Kappa Chapter, Norman.

ESA members presented non-perishable food items, monetary donations and reports in support of the ESA Virtual Food Drive. Oklahoma ranks 4th in the USA in the number of families that are living in a food insecure situation.

Convention announcements were made.

President, Deb Hughes recessed the First General Assembly of the 67th Annual Oklahoma State Convention at 11:05 a.m. to reconvene on Sunday Morning at 9:00 a.m.

Recess

Submitted by:
Charlene Law
Oklahoma State Recording Secretary
2009-2010

**Epsilon Sigma Alpha International
67th Annual Oklahoma State Convention
Second General Assembly Minutes
Sunday, May 2, 2010**

President, Deb Hughes, declared the Second General Assembly of the 67th Annual Convention of the Oklahoma State Council reconvened at 9:55 a.m.

Chaplain, Mary Toole gave the invocation and brunch was served.

President, Deb Hughes, presented the head table and made special introductions. She then presented the 2009-2010 Executive and General Boards.

Recording Secretary, Charlene Law, read a summary of the minutes from the First General Assembly and recorded changes in the roll call.

Awards Chairman, Janet Gray, presented the Service and Pallas Athene Awards.

President, Deb Hughes, presented the Nominating Committee results. The Nominating members are Lisa Zachau Gamma Pi, Inola, June Miller Beta Iota, McAlester, Dr. Billye Peterson Gamma Zeta, Edmond, Gwynn Nell Swanson, 1st VP/Nominating Chair and Deb Hughes, Jr. Past President

Sooner Seniorette President, Patsy Timmons, led the Sooner Seniorette induction ceremony for President, Deb Hughes.

Auditor, Lola Jaegers, advised that she completed the final audit on the books of State Treasurer, State Project Director, Petticoat Journal Editor (Angels), and the Acting Directory Chairman. These books were all in order. She will do the final audit on the books of the State Convention chairman when she is ready to close her books for the year.

Treasurer, Joyce Gibson moved to change authority over CD at the Bank of Commerce in Yukon. "I move that Tina Davenport-McKamie residing at Route 5, Box 321C in McAlester, Oklahoma as Oklahoma State Council Treasurer of Epsilon Sigma Alpha International, be authorized to open or close the certificate of deposit and/or the checking or savings account at the Bank of Commerce formerly known as Canadian State Bank in Yukon". Margaret Kramer, Gamma Kappa, Checotah seconded the motion, motion carried.

First Vice President Jacque Edwards gave the information for the 2011 Convention. The Convention will be April 29 through May 1, 2011, and the theme will be "Rock n' Roll with ESA". Ramona Paine-Means, will be Convention Chairman and Cathy Holsted will be Co-Convention Chairman. It will be held at the Clarion Hotel & Meridian Convention Center in Oklahoma City, room rate is \$99.00 per night with free parking. Hostess chapters will be Zeta Gamma, Shawnee, Sigma Chi, Inola, Omega Pi, Tulsa, Gamma Zeta, Edmond, Beta Zeta, Oklahoma City, Beta Psi, Clinton, Theta Tau, Kingfisher and Kappa Theta Guthrie.

Second Vice President, Gwynn Nell Swanson presented the 2012 convention bid. The Convention will be held at the Holiday Inn Hotel in Norman located off I-35 and Robinson Street April 27, 28 and 29, 2012. The room rate will be \$79 plus tax (\$88.78), single, double, triple or quad. Convention Chairman will be Janice Shockley of Delta Kappa, Norman and your hostesses are Delta Kappa, Norman, Beta Mu, Lawton, Sigma Chi, Inola and Zeta Gamma, Shawnee. Gwynn Nell Swanson moved we accept the bid for the 2012 Convention, since this is coming from a committee, no second is required, motion carried.

President, Deb Hughes, recognized the 2009-2010 Convention Committee and Host Chapters. The committee consisted of Convention Chairman, Judi York and Co-Chair Cheryl Young, Secretary, Charlene Law, Treasurer, Donna McCandless, Registration, Sandy Saunders, Program Book, Judi York and Decorations LeAnne Brewer, Barbara Childers and Kappa Alpha members. The Convention Host Chapters are Tulsa chapters Beta Gamma, Gamma Delta, Kappa Alpha, Omega Pi, Owasso, Eta Mu, Broken Arrow, Alpha Rho, and Jenks, Theta Sigma.

IC Recording Secretary, Vickie Farris, gave the IC Farewell message. Sooner Seniorettette, Joyce Whitewing-Slate, did a special presentation for IC Representative, Vickie Farris making her an "honorary Oklahoman." Deb Hughes presented Vickie "Made in Oklahoma" gifts from the OK State Council.

Sooner Seniorettette President, Patsy Timmons, reported the Sooner Seniorettette officers for this year. President Sue Knight, Secretary/Treasurer Bunnie Sullins and Historian Deb Hughes.

The following chairmen presented their gifts to the President: State Council Gift by Jacque Edwards, Scrapbook by Leslie Farabee and Faye Rikkola, Publicity by Lisa Zachau and Petticoat Journal by Petticoat Journal "Angels" June Miller and Tina-Davenport-McKamie.

President, Deb Hughes, gave the 2009-2010 State President's Closing Message.

Deb's gavel was lowered by Rosalie Griffith and Jacque's gavel was raised by Dee Carroll.

Deb presented the gavel to Jacque Edwards.

President, Jacque Edwards, gave her acceptance speech. She informed the members that her theme this year is "Cruisin' in the 50's" and her logo is musical notes.

President, Jacque Edwards, presented the 2010-2011 Executive Board:
The elected officer's are as follows: First Vice President – Gwynn Nell Swanson, Second-Vice President – Joyce Gibson, Recording Secretary – Linda Southerland, Treasurer – Tina Davenport-McKamie, Parliamentarian – Peggie Sprinkle, State Project Director – Charlene Law, Petticoat Journal Editor – Mary Adams, Junior Past President – Deb Hughes, Senior Past President – Bunnie Sullins and Corresponding Secretary – Shelby Labus,.

Second Vice President/Educational Chairman, Joyce Gibson, announced the 2010-2011 State Educational Theme will be "Approaching the Year with Grace in ESA" The focus will be on several different areas of importance from how to handle bank fraud to information about Social Security.

Announcements:

Cathy Holsted reported the winners from the 50/50 jar. Ruth Thompson was the winner of \$407.00 and Oklahoma State Council received \$407.00.

President, Jacque Edwards, declared the 67th Annual State Convention of the Oklahoma State Council of Epsilon Sigma International adjourned.

Robbin Brown and Linda Voss conducted the retirement of the flags.

The closing ritual was recited by all.

Submitted by:
Charlene Law
Oklahoma State Recording Secretary
2009-2010

**Epsilon Sigma Alpha International
Oklahoma State Council
Executive/General Board Meeting
June 19, 2010**

The Executive and General Board Meeting was called to order at 9:31 am by President Jacque Edwards, who requested that all cell phones be turned off or set to vibrate.

A reminder was given to see Shelly Labus for lunch reservations. Shelly reported that there were 47 lunch reservations at this time. President Jacque recognized the ladies of Zeta Gamma of Shawnee as hostesses for the lunch today.

Introductions were dispensed with until the State Council Meeting.

The committee to read the minutes of the 67th Oklahoma State Convention was Jeanne Meyer, Chairman, Maxine Wheelan, Judy Cravens and Billie Fritch. Maxine Wheelan reported that the minutes are approved as corrected by the committee and will be placed on file. The committee to read the minutes of the June 19th meeting is June Miller, Chairman, Margaret Kramer and Amber Alexander.

Corresponding Secretary, Shelly Labus, read the following list of regrets: Rosalie Griffith, Virginia Taylor, Priscilla Drummond, Sue Knight, Judy Cravens, Marilyn Joplin, Judi York, Nancy Baucom, Janette Murray, Nadine Moyer, Nellrita Barrick, Connie Johnson, Rosemary Benning, Lisa Zachau, Mozelle Smith and Patsy Timmons. All other correspondence received will be attached to the official minutes of this meeting.

2nd Vice President/ Educational Director: Joyce Gibson reported that her educational theme for 2010-2011 will be "Approaching the Years with Grace in ESA".

Treasurer: Tina Davenport-McKamie gave the treasurer's report and the 2010-2011 Proposed Budget. A motion was made by Tina Davenport-McKamie that the 2010-2011 Proposed Budget be presented for approval by the membership attending the State Council Meeting later today. Coming from a committee, no second is required. MOTION CARRIED.

Project Director: Charlene Law reported that the Balance in the Project Account is \$4,099.50. Allocation for OSD with 127 students is \$2,109.94. Allocation for OSB with 98 students is \$1,989.56. She then supplied a wish list for each school (attached). Cost of supplies listed for OSD was \$2,109.94. Cost of supplies listed for OSB totaled \$2,006.41 which is \$16.85 over allocation and will need to be covered by OSB or by donations from ESA. Deb Hughes volunteered to donate the \$16.85. A motion was made by Charlene Law that \$2,109.94 be purchased for OSD and \$2,006.41 be purchased for OSB. The motion was seconded by Billye Peterson, Gamma Zeta. MOTION CARRIED. Charlene announced that the tour dates were October 2, 2010 for OSD and February 26, 2011 for OSB

2011 Convention Chairman, Ramona Paine made a motion that the 2011 Convention registration remain at \$85 for members, DESA's, and ELAN's and at \$40 for men and guests. A second to the motion was made by Joyce Lacey-Kenney, Beta Psi, and vote was called. MOTION CARRIED.

Contest Chairman, Dr. Billye Peterson, apprised the board of the following potential changes to the contest rules to be voted on:

Membership – Because there is only one Membership Director in the state now, I move that the words “Senior” and “Junior” be deleted from the two membership judging sheets. It will now read “State Membership Director”. Motion was seconded by Margaret Kramer, Gamma Kappa, and voted on. MOTION CARRIED.

Gold Seal – Since the Gold Seal Entry Official Judging Sheet does not correspond with the Gold Seal Merit Award IC Judging Form, I move that the Gold Seal Entry Official Judging Sheet be deleted and replaced with the IC Judging Form. Motion was seconded by Peggie Sprinkle, Beta Gamma, and vote was called. MOTION CARRIED.

Association of the Arts - “ I move that the Association of the Arts Entry form be made uniform with IC by adding categories VII, VIII, and IX which allows the opportunity for more entries.” Robbin Brown, Zeta Gamma, seconded and motion was presented for vote. MOTION CARRIED.

DIANA – Since DIANA has been deleted as a contest by International, I move that everything pertaining to IC be deleted and DIANA be designated as an Oklahoma contest. Motion was seconded by Nancy Buck, Delta Kappa, and voted on. MOTION CARRIED.

In order to have the DIANA Judging sheet conform to what was previously voted on; I move the judging points be adjusted to 100 points. Gwynn Nell Swanson, Delta Kappa, seconded the motion and vote was taken. MOTION CARRIED.

Outstanding Youth – For the Outstanding Junior High Youth Award, I move a Cashier’s Check be presented in lieu of a Savings Bond, the amount to be determined per budget. Motion was seconded by Mary Johnson, Epsilon Kappa, and vote called. MOTION CARRIED.

Since the Outstanding Youth has been deleted as a contest by International, I move that everything pertaining to IC be deleted and Outstanding Youth be designated as an Oklahoma contest. Motion was seconded by Joy Agan, Beta Psi, and presented for vote. MOTION CARRIED. For the Outstanding Senior High Youth Award, I move that the amount of the cashier check be determined per budget. Motion was seconded and MOTION CARRIED.

Outstanding Chapter – On the official Judging Sheet for Outstanding Chapter, under the category MEETINGS #8A, change the word “their” to “a”. The word “their” eliminates any credit a member would get for attending any other District meeting if they can’t attend their own District meeting. I move the word “their” be replaced with “a” in #8A. A second to the motion was made by Marcia Ellington, Delta Kappa, and vote was called. MOTION CARRIED.

On the official Judging Sheet for Outstanding Chapter, under the category MEETINGS #8A,B & C, add the words “and Collegiate” to now read, “Each chapter member, DESA, MESA, ELAN and Collegiate attending a

- A) District Meeting
- B) State Meeting
- C) State Project Tour

This allows collegiate members to earn points for attending meetings. I move we accept these changes. Motion was seconded by Charlene Law, Gamma Delta, and presented for a vote. MOTION CARRIED.

To encourage more participation in sponsoring children at OSB and OSD, I move the maximum limit of 20 points be deleted from the official Judging Sheet for Outstanding Chapter. Motion was seconded by Donna Shook, Theta Tau, and voted on. MOTION CARRIED.

A motion was made by Deb Hughes that the ladies who are working the Tulsa and OKC Dream Homes be given attendance credit for this Council meeting. Motion was seconded by Linda Southerland, Beta Psi and voted upon. MOTION CARRIED.

President Jacque gave a brief description of the purpose of the Spirit Sticks. She reported that the Sooner Seniorette Mentoring Program was re-invented for the Executive and General Board.

State Council Fundraisers: Donna Shook will donate items for a silent auction at each Council meeting and Nancy Buck has donated a King size quilt to be used as a raffle with the drawing held at the 2011 State Convention. Raffle tickets will be \$1 each or 6 for \$5. Shopping on the Mall will also be available at the August Leadership Meeting in Guthrie.

Announcements: Reminders were given concerning Directory orders; PJ subscriptions; the 50/50 money jar and tickets for the grocery raffle; 2011 charms and pins for \$6; and the new Secret Sister Program. Mary Toole, secret sister chair, announced that the needs and wishes for OSB, OSD, and Easter Seals will be put on the website soon.

Meeting was adjourned at 10:44 am.

Submitted by:
Linda Southerland
State Recording Secretary
2010-2011

**Epsilon Sigma Alpha International
Oklahoma State Council
State Council Meeting
June 19, 2010**

The Oklahoma State Council Meeting was called to order at 11:00 AM by State President Jacque Edwards with the Opening Ritual. Chaplain Vivian Gibson gave the devotional for the day "Two Traveling Angels", and led the members in the Pledge of Allegiance.

President Jacque Edwards welcomed the members to the meeting and recognized Lora Thompson and the members of Zeta Gamma. Jacque thanked them for securing the meeting place and being hostesses for the luncheon today. She then made the following introductions: Past IC Council President/ESA Foundation Chair, Sooner Seniorette and 2011 Convention Co-Chair, Cathy Holsted; IC Audit Committee Member, Sooner Seniorette and State Webmaster, Aletha Bolt; Past ESA Foundation Director, ESA State Counselor Chair, Sooner Seniorette and State Chaplain, Vivian Gibson; Past ESA Foundation Chairman and Sooner Seniorette, Lola Jaegers; Past ESA Foundation Director, Sooner Seniorette and District V Coordinator, Jeanne Meyer; Dixie Palmer Founders and Sooner Senioresses, Joyce Whitewing-Slate and Billie Fritch; and other Sooner Senioresses.

Roll was taken from the registration. There were 56 members, two guests and one ELAN in attendance. The committee to read the minutes of the 67th Annual Oklahoma State Convention was: Jeanne Meyer, Chairman, Maxine Wheelan, Judy Cravens and Billie Fritch. Jeanne Meyer reported that the minutes were approved as corrected by the committee and will be placed on file.

The committee to read the minutes of this meeting is June Miller, Chairman, Margaret Kramer and Amber Alexander.

First Vice President/Nominating Chairman, Gwynn Nell Swanson, introduced the nominating committee. They are Billye Peterson-District II; Lisa Zachau-District III; Robbin Brown-District IV; June Miller-District V; and Gwynn Nell Swanson. She announced that the District Coordinators are: District II-Nellrita Barrick, District III-Rosemary Benning, District IV-Nancy Baucom, and District V-Jeanne Meyer.

Second Vice President/Educational Director, Joyce Gibson, gave a mini-educational on her theme "Approaching the Years with Grace in ESA". The educational today covered Health and Exercise.

Corresponding Secretary, Shelly Labus, read the list of regrets for today's meeting.

District Coordinators or Vice-Coordinators announced their Leadership meetings. District II Leadership will be on August 28, 2010 at the First United Methodist Church in Clinton; District III Leadership will be September 11, 2010 at the Highland Park Christian Church in Tulsa; District IV Leadership will be September 18th at the Greiner School in Lawton; and District V Leadership will be September 25, 2010 at the Bridgeport Dunes Condos Clubhouse at Eufaula.

Nancy Buck, Music Entertainer, passed out a sheet of trivia questions concerning music and singers in the 1950's.

Project Director, Charlene Law, reported that the Balance in the Project Account is \$4,099.50. Allocation for OSD with 127 students is \$2,109.94. Allocation for OSB with 98 students is \$1,989.56. She then read a wish list for each school. Total cost of supplies listed for OSD was \$2,109.94. Total cost of supplies listed for OSB totaled \$2,006.41. Upon recommendation of the Executive and General Board, Charlene moved that we purchase supplies for OSB at a total cost of \$2,109.94 and purchase the OSB request up to the amount allotted of \$1,989.56 + the amount of \$16.85 donated during the Executive and General Board meeting. MOTION CARRIED. Charlene announced that the tour dates were October 2, 2010 for OSD and February 26, 2011 for OSB. If anyone would like to visit their sponsored children at OSB, there will be an Open House on February 18, 2011.

2010 Convention Report was given by Deb Hughes. She reported a Total Income of \$21,203.60 with expenses totaling \$20,391.74. Profit of \$811.86 will be distributed to the host chapters which include: Alpha Rho-Broken Arrow, Theta Sigma-Jenks, Eta Mu-Owasso and Beta Gamma, Gamma Delta, Kappa Alpha, and Omega Pi-Tulsa. There were 148 members (including 9 first time attendees), 8 guests, and 12 spouses for a total registration of 168.

2011 Convention Report- Ramona Paine, 2011 convention chairman passed out a trivia quiz on the rock and roll era to be completed during lunch. She then announced registration fees for the convention. Upon recommendation of the Executive and General Board, I move that the registration fees for the 2011 Convention be set as follows: Full registration for members/DESA/ELAN - \$85; Men/guests - \$40. MOTION CARRIED.

Membership Chairman, Mary Johnson, explained the hands on project members will work on during lunch. She stated that her theme will be: The Secret is Out and We Are ESA Proud.

Vivian Gibson, Chaplain, gave the blessing and the members broke for lunch.

Easter Seals Chairman, Marcie Lucas Ellington, introduced Vida Wasinger, Oklahoma Easter Seals Director of Operations. President Jacque presented a check in the amount of \$625 on behalf of the Oklahoma State Council of ESA. This was the proceeds from the annual Silent Auction at our State Convention held the last weekend in April. In addition to this check, Marcie announced that a donation of \$200 was also received which made our total donations so far this year \$825.

Contest Chairperson, Dr. Billye Peterson, presented contest changes for approval of the Council as follows:

Membership – Because there is only one Membership Director in the state now, I move that the words “Senior” and “Junior” be deleted from the two membership judging sheets. It will now read “State Membership Director”. Upon recommendation of the Executive and General Board, I move that we accept the proposed contest changes as listed. MOTION CARRIED.

Gold Seal – Since the Gold Seal Entry Official Judging Sheet does not correspond with the Gold Seal Merit Award IC Judging Form, I recommend that the Gold Seal Entry Official Judging Sheet be deleted and replaced with the IC Judging Form. Upon recommendation of the Executive and General Board, Billye moved that we accept the proposed contest changes as listed. MOTION CARRIED.

Association of the Arts - I propose that the Association of the Arts Entry form be made uniform with IC by adding categories VII, VIII, and IX which allows the opportunity for more entries. Upon recommendation of the Executive and General Board, a motion was made by Billye that we accept the proposed contest changes as listed. MOTION CARRIED.

DIANA – Because DIANA has been deleted as a contest by International, I recommend that everything pertaining to IC be deleted and DIANA be designated as an Oklahoma contest. Upon recommendation of the Executive and General Board, Billye moved that we accept the proposed contest changes as listed. MOTION CARRIED.

In order to have the DIANA Judging sheet conform to what was previously stated; I recommend the judging points be adjusted to 100 points. Upon recommendation of the Executive and General Board, I move that we accept the proposed contest changes as listed. MOTION CARRIED.

Outstanding Youth – For the Outstanding Junior High Youth Award, I suggest that a Cashier’s Check be presented in lieu of a Savings Bond, the amount to be determined per budget. Upon recommendation of the Executive and General Board, Billye moved that we accept the proposed contest changes as listed. MOTION CARRIED. Since the Outstanding Youth has been deleted as a contest by International, I propose that everything pertaining to IC be deleted and Outstanding Youth be designated as an Oklahoma contest. Upon recommendation of the Executive and General Board, I move that we accept the proposed contest changes as listed. MOTION CARRIED. For the Outstanding Senior High Youth Award, the amount of the cashier check to be determined per budget. Upon recommendation of the Executive and General Board, I move that we accept the proposed contest changes as listed. MOTION CARRIED.

Outstanding Chapter – I recommend that on the official Judging Sheet for Outstanding Chapter, under the category MEETINGS #8A, change the word “their” to “a”. The word “their” eliminates any credit a member would get for attending any other District meeting if they can’t attend their own District meeting. Upon recommendation of the Executive and General Board, Billye moved that we accept the proposed contest changes as listed. MOTION CARRIED. On the official Judging Sheet for Outstanding Chapter, under the category MEETINGS #8A,B & C, add the words “and Collegiate” to now read, “Each chapter member, DESA, MESA, ELAN and Collegiate attending a

A) District Meeting

- B) State Meeting
- C) State Project Tour

This allows collegiate members to earn points for attending meetings. I recommend we adopt these changes. Upon recommendation of the Executive and General Board, she moved that we accept the proposed contest changes as listed. MOTION CARRIED. To encourage more participation in sponsoring children at OSB and OSD, I propose that the maximum limit of 20 points be deleted from the official Judging Sheet for Outstanding Chapter. Upon recommendation of the Executive and General Board, it was moved that we accept the proposed contest changes as listed. MOTION CARRIED.

Treasurer, Tina Davenport-McKamie, presented the Treasurer’s Report as of June 19, 2010.

Balance forward	\$ 3,800.52
Income	\$ 1,882.57
Expenses-FDIC Insurance	\$.86
Balance on hand	\$ 5,682.23
Speakers Fund Balance (CD)	\$ 1,214.19
IC Campaign Fund Balance	\$ 219.36
DOER’s Balance	\$ 322.25
Certificate of Deposit	\$ 4,022.28

Tina then presented the 2010-2011 Proposed Budget. After her presentation, Tina made the following statement, “Upon recommendation of the Executive and General Board, I move that the Proposed Budget be approved by the membership. MOTION CARRIED.

Nancy Buck, Music Entertainer, had the members present participate in a Twist Contest. Fun was had by all.

President Jacque presented “Spirit Awards” to Billye Peterson, June Miller and Shelly Labus. She then reported that 38 directories have been sold to date, and that the Directories will be distributed at the August Leadership in Guthrie.

Sue Patterson, Credentials Chairman, reported that Oklahoma will have 72 votes at the IC Convention in July.

Deb Hughes reported on the IC Virtual Food Drive and IC “Show Me the Money” tickets. She then reported on Dream Home attendance credit. Upon recommendation of the Executive and General Board, she made a motion that attendance credit be given to those working the Tulsa and OKC Dream Homes during this Council meeting. MOTION PASSED.

ESA Foundation Chairperson, Rita Hains, reported that she and Vivian Gibson are making a “Made in Oklahoma” basket for the auction at IC Convention. They are asking for donations of items from local areas to include in the basket. Donations should reach Rita or Vivian prior to July 1. Cash donations will also be accepted.

Secret Sister Coordinator, Mary Toole, stated that in regard to the new Secret Sister Gift Program this year, it has been recommended that the gift list for OSD, OSB, and Easter Seals be posted on the website so if anyone wanted to participate they could and not just the Board. Not every Board member is able to participate at each Council meeting.

2012 Convention Chairman, Cathy Holsted, reminded everyone that they need to purchase Convention T-Shirts or Aprons for the 2012 Convention, as this will be the official convention dress.

Vivian Gibson gave an updated chaplain report on membership.

Publicity Chairman, Joyce Lacey-Kenney, reminded everyone to start working on their Chapter Publicity Book, collecting newspaper articles and clipping meeting notices will make it easier than waiting until the last month before deadline

Mary Adams, PJ Editor, gave a reminder of the July 5th deadline for the August/September edition of the Petticoat Journal.

New Business: President Jacque stated that she wants to recognize one person (from each chapter) at each District Leadership and spring meeting. The criteria for nominations is being passed around by the AA's.

ANNOUNCEMENTS

Silent Auction winners were announced by Donna Shook. Auction total was \$130.00. Tina Davenport-McKamie then reported that a \$25 donation was received to make the total \$155.

Charlene Law has sponsor forms for the State Projects.

August Leadership will be August 21st in Guthrie at the R & R Depot (Shopping on the Mall - \$10 per table) Door prizes will be provided by District II.

Trivia and Door Prizes winners were announced. Door prizes today were furnished by the Chapters from District III.

The meeting was adjourned at 2:12 pm and members recited the Closing Ritual.

Submitted by:
Linda Southerland
State Recording Secretary
2010-2011